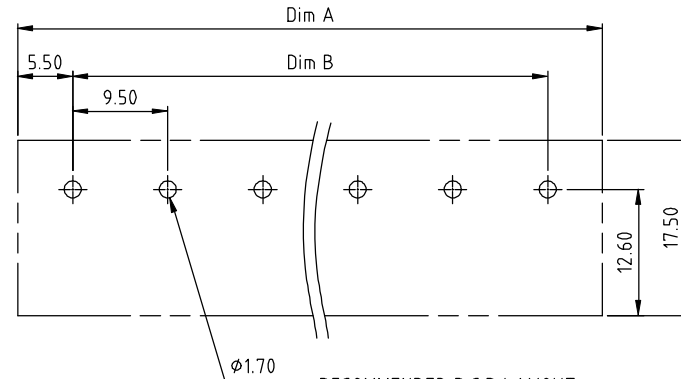
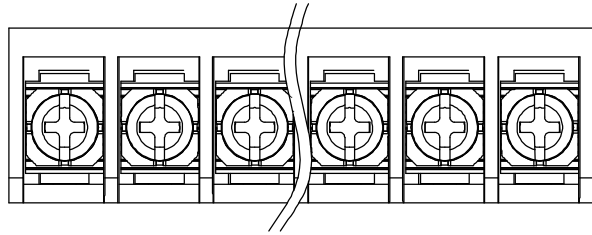
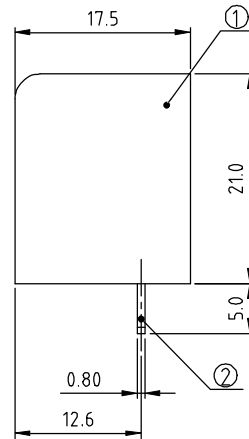
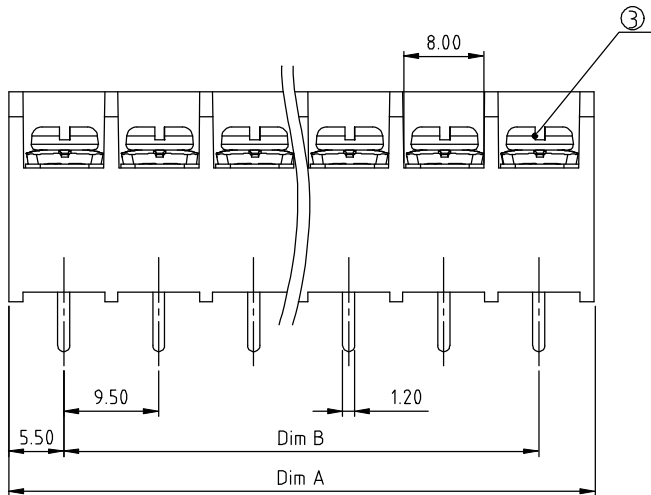


PRODUCT NUMBER	PITCH
YK44 Axx0x0JOG	9.50 mm



RECOMMENDED P.C.B. LAYOUT
TOP VIEW



- MATERIALS & ELECTRICAL
- RATED VOLTAGE & CURRENT: 300V 25A
 - WITHSTAND VOLTAGE: AC2000V/min
 - INSULATION RESISTANCE: 1000 M Ω OR MORE AT DC 500 V
 - OPERATING TEMPERATURE RANG: -40 °C ~ +115 °C
 - SCREW TORQUE VALUE: 10.54 Lb-In
 - WIRE RANGE: 22-12 AWG
 - 1) HOUSING: Thermoplastic, UL 94 V-0 BLACK
 - 2) TERMINAL: BRASS, 0.8t
 - 3) TERMINAL SCREWS: STEEL, M3.5

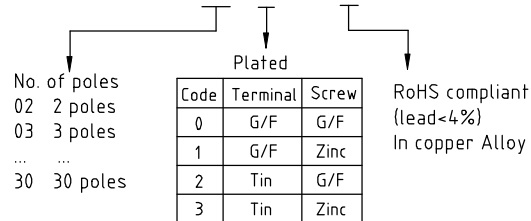
DIMENSION

Dim A	N \times 9.5+1.5
Dim B	(N-1) \times 9.5

N=Number of poles

Poles	Tolerance
2p-4p	\pm 0.20
5p-8p	\pm 0.25
9p-16p	\pm 0.35
17p-23p	\pm 0.40
24p-30p	\pm 0.50

PART NO.: YK 44Axx 0 x 0 JOG



Code	Terminal	Screw
0	G/F	G/F
1	G/F	Zinc
2	Tin	G/F
3	Tin	Zinc

mat'l. code				surface ASME Y14.5		tolerance ASME Y14.5		projection		product family	
ltr				ecn no		dr		date		TERMINAL BLOCK	
				angles		X. \pm 0.5		MM		title	
				X' \pm 1"		X.XX \pm 0.3		scale		TERMINAL BLOCK	
				appd		SHI JUN		061614		BARRIER TYPE	
sheet index				revision sheet		A		1		sheet 1 of 1 size	
										A4	
										YK44Axx0x0JOG	
										CUSTOMER Drawing	