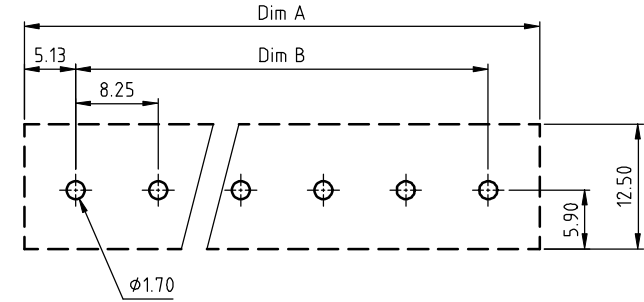
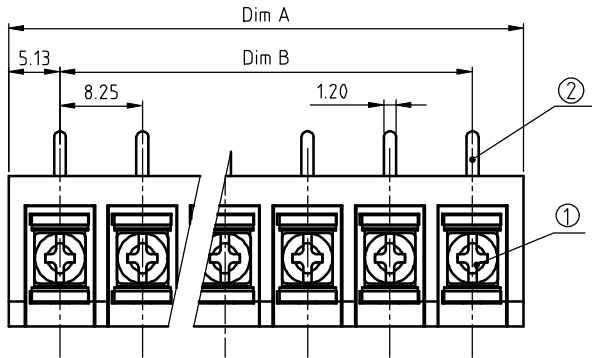


PRODUCT NUMBER	PITCH
YK332xx0x0J0G	8.25 mm

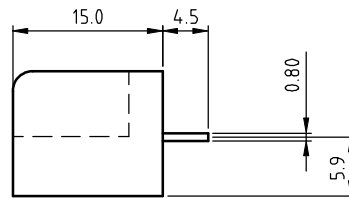
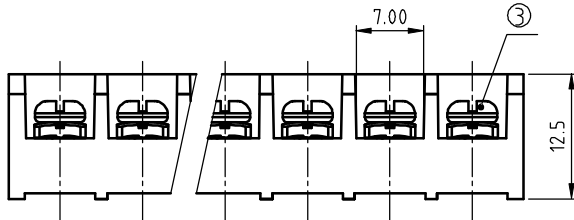


RECOMMENDED P.C.B. LAYOUT
BOTTOM VIEW

MATERIALS & ELECTRICAL

RATED VOLTAGE & CURRENT:	cULus / CQC
WITHSTAND VOLTAGE:	300 V, 20 A / 300 V, 32 A
INSULATION RESISTANCE:	AC 2500V/Min
OPERATING TEMPERATURE RANG:	1000 MΩ OR MORE AT DC 500 V
SCREW TORQUE VALUE:	-40 °C +115 °C
WIRE RANGE:	8.8 Lb-In
1) HOUSING:	22 - 12 AWG
2) TERMINAL:	Thermoplastic, UL 94 V-0 BLACK
3) TERMINAL SCREWS:	BRASS, 0.8t
APPROVAL:	STEEL, M3

APPROVAL:



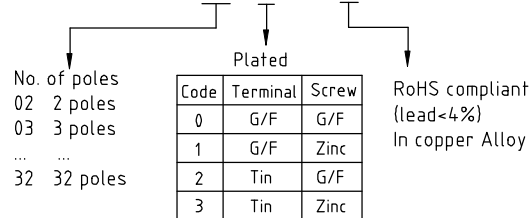
DIMENSION

Dim A	Nx8.25+2.0
Dim B	(N-1)x8.25

N=Number of poles

Poles	Tolerance
2p-5p	±0.20
6p-10p	±0.25
11p-16p	±0.35
17p-24p	±0.40
25p-32p	±0.50

PART NO.: YK 332xx 0 x 0 JOG



mat'l. code		surface	tolerance	projection	product family	
ltr		ASME Y14.5	ASME Y14.5		TERMINAL BLOCK	
ecn no	dr	tolerances unless otherwise specified			title	
date		angles	X.±0.5	MM	TERMINAL BLOCK	
		fillet	X.X±0.3	scale	BARRIER TYPE	
		X'±1"	X.XX±0.1		sheet 1 of 1 size	
dr	EVAN LU	061614			A4	
enr	EVAN LU	061614			YK332xx0x0J0G	
chr	HANKE FENG	061614			CUSTOMER Drawing	
appd	SHI JUN	061614				
sheet index	revision sheet	A	1			