

AC Filter for PCB Mounting Cost Optimized

Standard- or Medical-Filter



### Description

- Chassis: PCB Mounting, from top
- Line filter in standard and medical version, 1-stage, standard attenuation
- For PCB-mounting or quick connect terminals
- Excellent price/performance ratio

### Approvals

- VDE Certificate Number: 40004673
- UL File Number: E72928

### Characteristics

- Cost-saving plastic housing
- Designed for standard applications
- Protection against interference voltage from the mains
- Possible interferences generated in the equipment are strongly attenuated
- For standard applications
- Suitable for use in equipment according to IEC/UL 60950

### Other versions on request

- Version with wire connection
- Medical version M80

### References

Alternative: Standard version

### Weblinks

[pdf-datasheet](#), [html-datasheet](#), [General Product Information](#), [Approvals](#), [CE declaration of conformity](#), [RoHS](#), [CHINA-RoHS](#), [REACH](#), [e-Shop](#), [SCHURTER-Stock-Check](#), [Distributor-Stock-Check](#), [Detailed request for product](#)

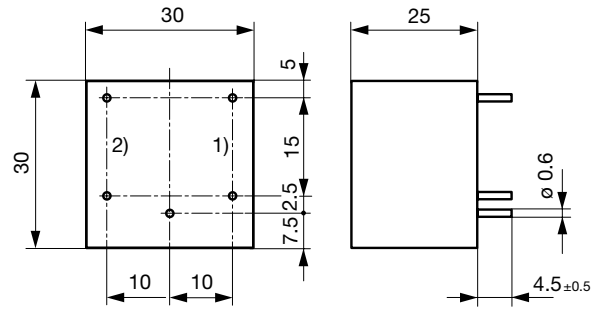
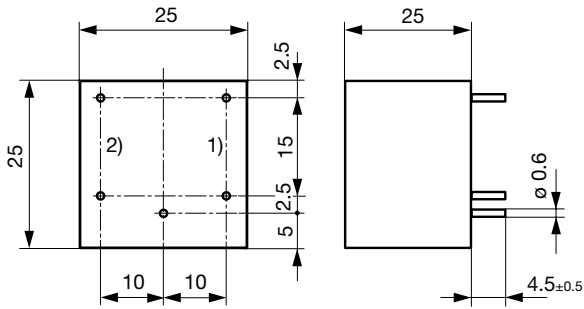
### Technical Data

|                           |   |             |   |
|---------------------------|---|-------------|---|
| Ratings IEC               | 0.6 - 6A @ Ta 40 °C / 250VAC; 50Hz  | Line Filter | Standard and Medical Version, IEC 60939, UL 1283, CSA C22.2 no. 8 |
| Ratings UL/CSA            | 0.6 - 6A @ Ta 40 °C / 125VAC; 60Hz  |             | <a href="#">Technical Details</a>                                 |
| Leakage Current           | standard < 0.25 mA (250V / 60Hz)<br>medical < 5 µA (250 V / 60 Hz)          | MTBF        | > 200'000h acc. to MIL-HB-217 F                                   |
| Dielectric Strength       | > 1.7 kVDC between L-N<br>> 2.7 kVDC between L/N-PE<br>Test voltage (2 sec) |             |   |
| Allowable Operation Temp. | -25 °C to 85 °C   |             |   |
| Climatic Category         | 25/085/21 acc. to IEC 60068-1   |             |   |
| Protection Class          | Suitable for appliances with protection class I acc. to IEC 61140           |             |   |
| Terminal                  | For PCB mounting , tin-plated   |             |   |
| Material: Housing         | Thermoplastic, black, UL 94V-0  |             |   |

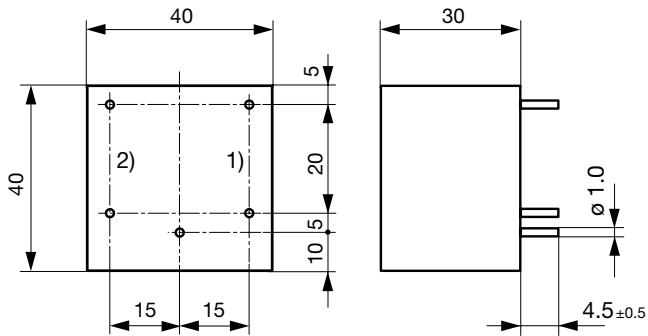
**Dimension**

Case 13P

Case 18P



Case 24P

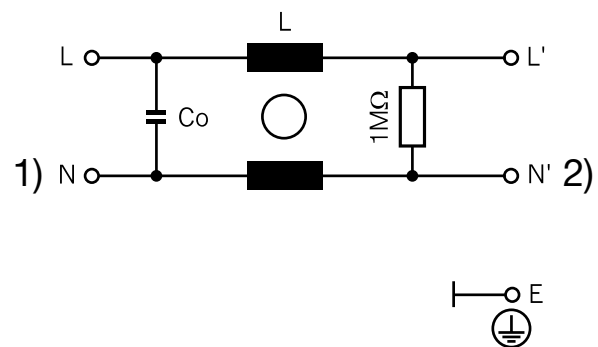
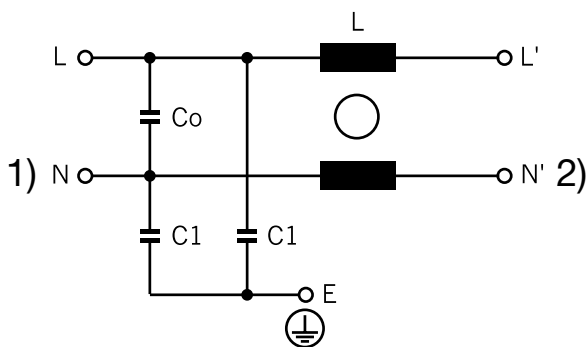


1) Line  
2) Load

**Diagrams**

S1 standard version

S2 medical version



1) Line  
2) Load

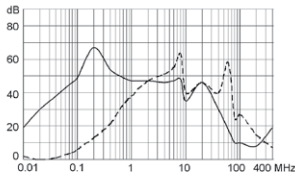
1) Line  
2) Load

**Attenuation Loss**

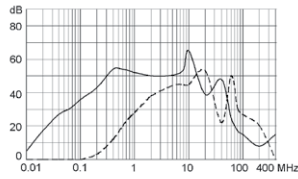
---- differential mode    \_\_\_\_ common mode

Standard version

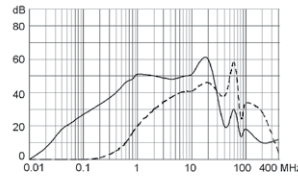
0.6 A



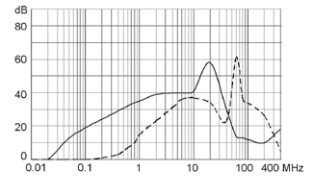
1 A



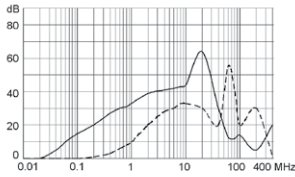
2 A



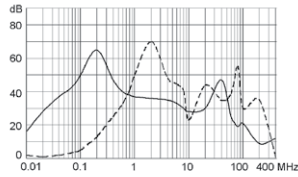
4 A



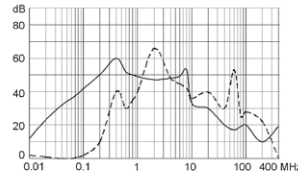
6 A



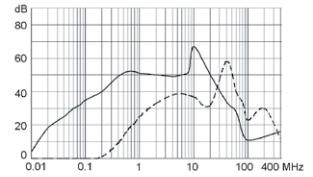
0.7 A



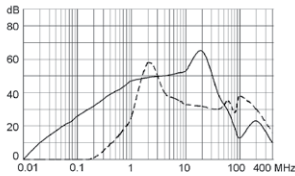
1 A



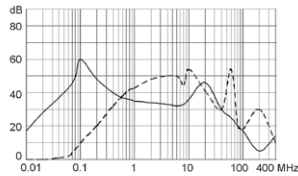
2 A



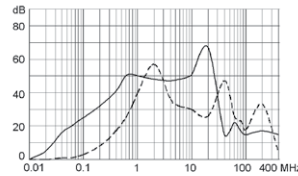
3 A



1 A

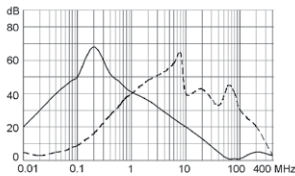


3 A

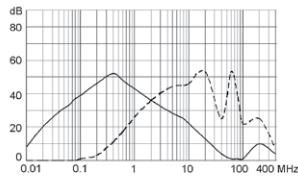


Medical version (M5)

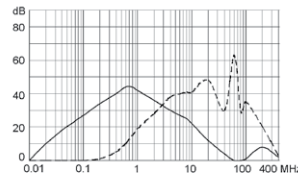
0.6 A



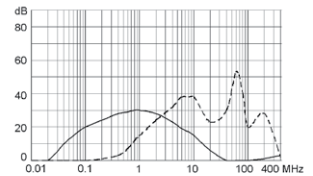
1 A



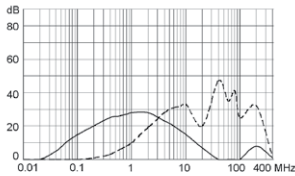
2 A



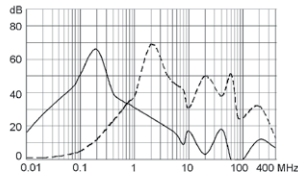
4 A



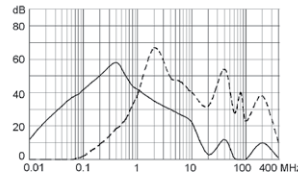
6 A



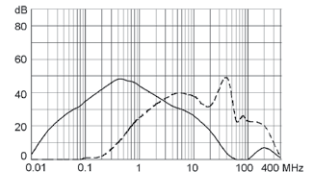
0.7 A



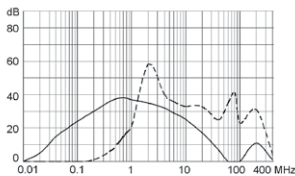
1 A



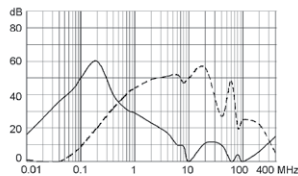
2 A



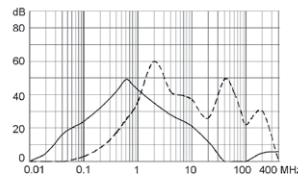
3 A



1 A



3 A



## All Variants

| Rated Current [A] | Filter-Type          | L [mH]  | Co / C2 (X2) [µF] | C1 (Y2) [nF] | Diagram | Weight [g] | Housing | Order Number |
|-------------------|----------------------|---------|-------------------|--------------|---------|------------|---------|--------------|
| 0.6               | Standard Version     | 2 x 40  | 0.015             | 2.2          | S1      | 27 g       | 13P     | 5500.2000    |
| 1                 | Standard Version     | 2 x 10  | 0.015             | 2.2          | S1      | 27 g       | 13P     | 5500.2001    |
| 2                 | Standard Version     | 2 x 4   | 0.015             | 2.2          | S1      | 27 g       | 13P     | 5500.2002    |
| 4                 | Standard Version     | 2 x 1.5 | 0.015             | 2.2          | S1      | 27 g       | 13P     | 5500.2003    |
| 6                 | Standard Version     | 2 x 0.8 | 0.015             | 2.2          | S1      | 35 g       | 13P     | 5500.2004    |
| 0.7               | Standard Version     | 2 x 40  | 0.015             | 2.2          | S1      | 32 g       | 18P     | 5500.2005    |
| 1                 | Standard Version     | 2 x 20  | 0.022             | 2.2          | S1      | 32 g       | 18P     | 5500.2006    |
| 2                 | Standard Version     | 2 x 6   | 0.022             | 2.2          | S1      | 32 g       | 18P     | 5500.2007    |
| 3                 | Standard Version     | 2 x 3   | 0.022             | 2.2          | S1      | 32 g       | 18P     | 5500.2008    |
| 1                 | Standard Version     | 2 x 30  | 0.047             | 2.2          | S1      | 78 g       | 24P     | 5500.2009    |
| 3                 | Standard Version     | 2 x 4   | 0.047             | 2.2          | S1      | 78 g       | 24P     | 5500.2010    |
| 0.6               | Medical Version (M5) | 2 x 40  | 0.015             | -            | S2      | 35 g       | 13P     | 5500.2116    |
| 1                 | Medical Version (M5) | 2 x 10  | 0.015             | -            | S2      | 35 g       | 13P     | 5500.2117    |
| 2                 | Medical Version (M5) | 2 x 4   | 0.015             | -            | S2      | 25.5 g     | 13P     | 5500.2118    |
| 4                 | Medical Version (M5) | 2 x 1.5 | 0.015             | -            | S2      | 35 g       | 13P     | 5500.2119    |
| 6                 | Medical Version (M5) | 2 x 0.8 | 0.015             | -            | S2      | 35 g       | 13P     | 5500.2120    |
| 0.7               | Medical Version (M5) | 2 x 40  | 0.015             | -            | S2      | 45 g       | 18P     | 5500.2121    |
| 1                 | Medical Version (M5) | 2 x 20  | 0.022             | -            | S2      | 45 g       | 18P     | 5500.2122    |
| 2                 | Medical Version (M5) | 2 x 6   | 0.022             | -            | S2      | 45 g       | 18P     | 5500.2123    |
| 3                 | Medical Version (M5) | 2 x 3   | 0.022             | -            | S2      | 45 g       | 18P     | 5500.2124    |
| 1                 | Medical Version (M5) | 2 x 30  | 0.047             | -            | S2      | 78 g       | 24P     | 5500.2125    |
| 3                 | Medical Version (M5) | 2 x 4   | 0.047             | -            | S2      | 78 g       | 24P     | 5500.2126    |

Most Popular.

Availability for all products can be searched real-time: <http://www.schurter.com/en/Stock-Check/Stock-Check-SCHURTER>

**Packaging unit** 50 Pcs