

PCB LAYOUT

	Dim A	Dim B
2-6p	± 0.20	± 0.15
7-12p	± 0.30	± 0.25
13-16p	± 0.40	± 0.35

N = Number of poles
 Dim A = $N \times 6.35$
 Dim B = $(N-1) \times 6.35$

SIGN	DATE	DESCRIPTION	APPROVER

THIS IS CAD DRAWING, DO NOT REVISE MANUALLY!!!

Material:

- Insulator(housing): Thermoplastic (UL 94V-0)
- Metal housing: Brass
- Contacts: Brass
- Terminal screw: Steel Zinc plating"-slot type

Electrical

- Voltage rating: 600VAC
- Current rating: 30A
- Wire range:
 - Solid wire(AWG): 10-24
 - Stranded wire(AWG): 10-24
- Torque(Lb-In): 8.9
- Screw: M3.5
- Wire strip length: 8-9mm
- Withstanding Voltage: 1.6KV
- Operating temperature: -40°C to +115°C
- Soldering temperature: 250°C±10°C/5 Sec

RoHS Compliant

PART NUMBER:

OSTKPXX0150

No. of Poles
 02 2 Poles
 03 3 Poles

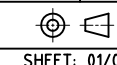
 12 12 Poles

COLOR
 0: Black
 5: Green (Standard)
 6: Blue
 8: Grey

THESE DRAWINGS AND SPECIFICATIONS ARE THE PROPERTY OF ON-SHORE TECHNOLOGY, INC. AND SHALL NOT BE REPRODUCED, COPIED OR USED IN ANY MANNER WITHOUT THE PRIOR WRITTEN CONSENT OF ON-SHORE TECHNOLOGY, INC.



TITLE		OSTKP 6.35 series - solder pins staggered by half pin spacing (without cover)			
PART NO.	OSTKPXX0150	DWG NO.	OSTKPXX0150.DWG		
APPROVED	CHECKED	DESIGNED	DRAWN	CUST NO.	Tolerance
Marvin	Marvin	Jacke	Jacke		X. ±0.50
2009.04.07	2009.04.07	2008.12.17	2008.12.17		X.X ±0.30
					X.XX ±0.10
					X° ±1°



UNIT: mm
 SCALE: NONE
 REV: B

SHEET: 01/01