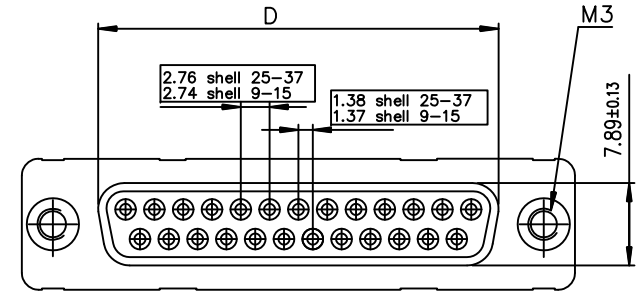
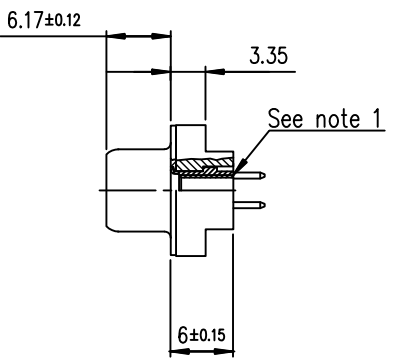
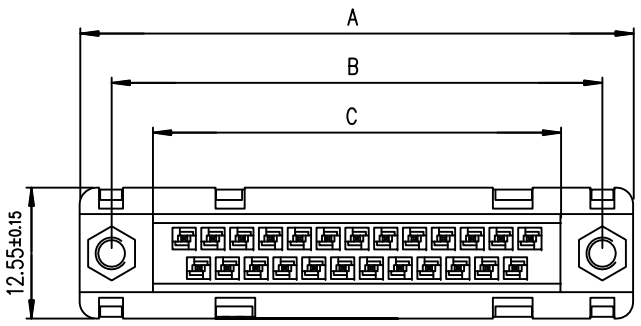


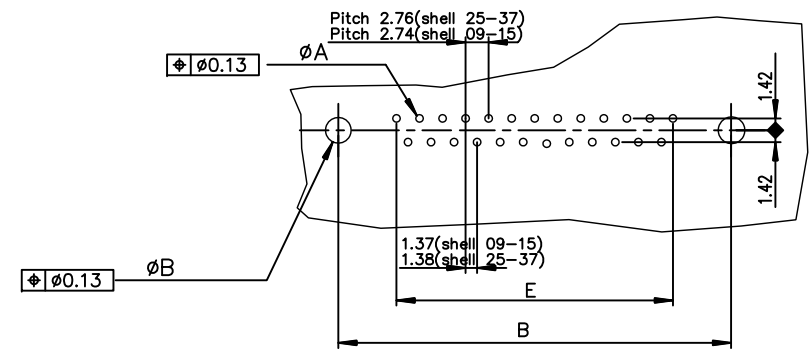
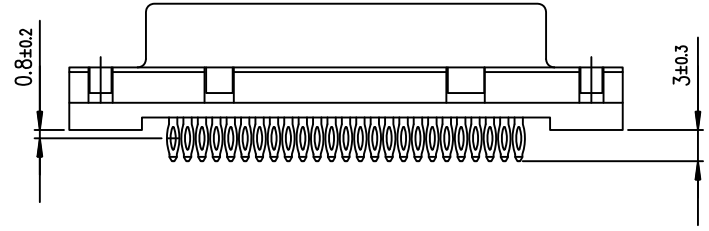


FCIconnect.com

Copyright FCI



PC board drilling dimensions(after plating)  
(thickness ≤ 3.20±0.30mm)



Notes:  
1) The nut can protrude above the surface of insulator but maintaining the footprint dimension 6.0±0.15 mm.

GENERAL CHARACTERISTICS AND ROHS INFORMATIONS:  
SEE DRAWING C01-8646-0001

LEAD FREE PART NUMBER

| SHELL | A±0.38 | B±0.12 | C±0.10 | D±0.25 | E±0.07 | PART NUMBER    | PART NUMBER    | PART NUMBER    |
|-------|--------|--------|--------|--------|--------|----------------|----------------|----------------|
| 09    | 30.81  | 24.99  | 16.96  | 16.21  | 10.96  | D09S91C4PL00LF | D09S91C6PL00LF | D09S91C8PL00LF |
| 15    | 39.14  | 33.32  | 25.18  | 24.54  | 19.18  | D15S91C4PL00LF | D15S91C6PL00LF | D15S91C8PL00LF |
| 25    | 53.03  | 47.04  | 39.12  | 38.25  | 33.12  | D25S91C4PL00LF | D25S91C6PL00LF | D25S91C8PL00LF |
| 37    | 69.32  | 63.50  | 55.68  | 54.71  | 49.68  | D37S91C4PL00LF | D37S91C6PL00LF | D37S91C8PL00LF |
|       |        |        |        |        |        | gold flash     | 0.76µ gold     | 1.25µ gold     |

|             |  |             |  |                               |  |             |  |  |  |
|-------------|--|-------------|--|-------------------------------|--|-------------|--|--|--|
| mat'l. code |  | surface     |  | tolerance                     |  | projection  |  | product family                                 |  |
| -           |  | ISO 1302    |  | ISO 406 ISO 1101              |  | D-SUB       |  | D-SUB  |  |
| Ltr         |  | ecn no      |  | dr                            |  | date        |  | title  |  |
| K           |  | ELX-I-21256 |  | AB                            |  | 2015/07/14  |  | FEMALE CONNECTOR DELTA-D<br>STRAIGHT PRESS FIT |  |
|             |  | angles      |  | linear                        |  | MM          |  | dwg no   |  |
|             |  | 0°±2'       |  | .0±0.1<br>.00±0.1<br>.000±0.1 |  | scale 2:1   |  | sheet 1 of 1                                   |  |
|             |  | dr          |  | engr                          |  | chr         |  | type   |  |
|             |  | JOUBERT     |  | ALIAS BABU                    |  | MITHUN PAUL |  | Product Customer Drawing                       |  |
|             |  | 1995/03/24  |  | 2015/07/14                    |  | 2015/07/14  |  | C01-8646-0128                                  |  |
|             |  |             |  | app                           |  | BIJU K PAUL |  | A3   |  |
|             |  |             |  |                               |  |             |  |  |  |
| sheet index |  | revision    |  | K                             |  |             |  |  |  |
|             |  | sheet       |  | 1                             |  |             |  |  |  |