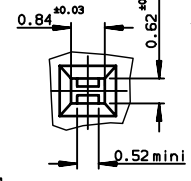
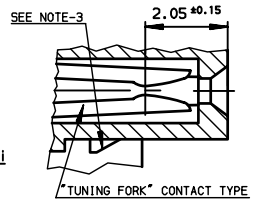


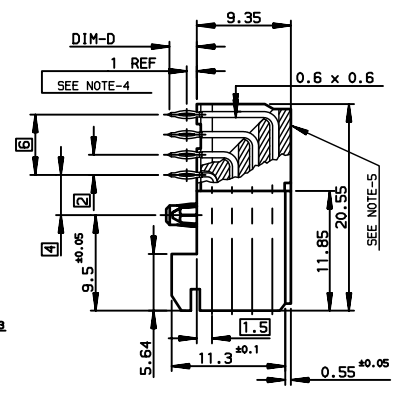
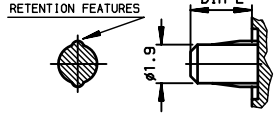
DETAIL-A



SECTION-FF



DETAIL OF PRESS-IN PEGS



- NOTE-1: PRESS-IN RETENTION PEG
 NOTE-2: CONNECTORS WITH PCB-2.4mm ARE COMPATIBLE WITH WIDE AND NARROW BODIES
 NOTE-3: PLUG FOR CODING KEY FIXING
 NOTE-4: EYE OF THE NEEDLE PRESS-FIT CTS TYPE
 NOTE-5: FLAT ROCK INSERTION TOOLING IN PCB, SEE DRW REF:C-8626-1003
 NOTE-6: METALIZED HOLE DEFINITION, SEE GS-12-447
 NOTE-7: IF SUFFIX "P" IS ADDED IN P/N, PACKAGING IS IN TRAYS, BUT CONNECTOR MARKING IS WITHOUT "P"
 Example : HM1FxxxxxxxH6PLF,
 marking:HM1FxxxxxxxH6LF

TIN LEAD PART NUMBER

Part Number: HM1F44FDP000H6		
TERMINATION TYPE	D = 2.90 ±0.3	L = 3 ±0.05

LEAD FREE PART NUMBER

Part Number: HM1F44FDP000H6LF		
TERMINATION TYPE	D = 2.90 ±0.3	L = 3 ±0.05

GENERAL CHARACTERISTICS AND ROHS INFORMATIONS:

SEE : GS-12-447

European Views

www.fciconnect.com		surface ISO 1302 ✓	tolerance std ISO 406 ISO 1101	projection mm
TOLERANCES UNLESS OTHERWISE SPECIFIED				
Dr	CHAMPION	1991/07/30	ANGULAR	LINEAR
Eng	LENOIR	1991/07/30	0.X	±0.1
Chr	LEGARE	1991/07/30	0.XX	±0.1
Appr	LEGARE	1991/07/30	0.XXX	±0.1
Product family			METRAL	
Title			METRAL FEMALE 4 ROWS 192 CTS	
catalog no			C-8626-0067	
Rev.			K	
sheet 1 of 1			CUSTOMER	

REDUCED SCALE SHEET

rev	ecn no	dr	date
F	-	CHA	1999/04/14
G	LS05-004	MLE	2005/02/17
H	LS06-0095	LGO	2006/06/30
J	LS06-0159	MLE	2006/10/16
K	LS07-0266	MLE	2007/11/06
-	-	-	-
-	-	-	-

Copyright FCI. FCI