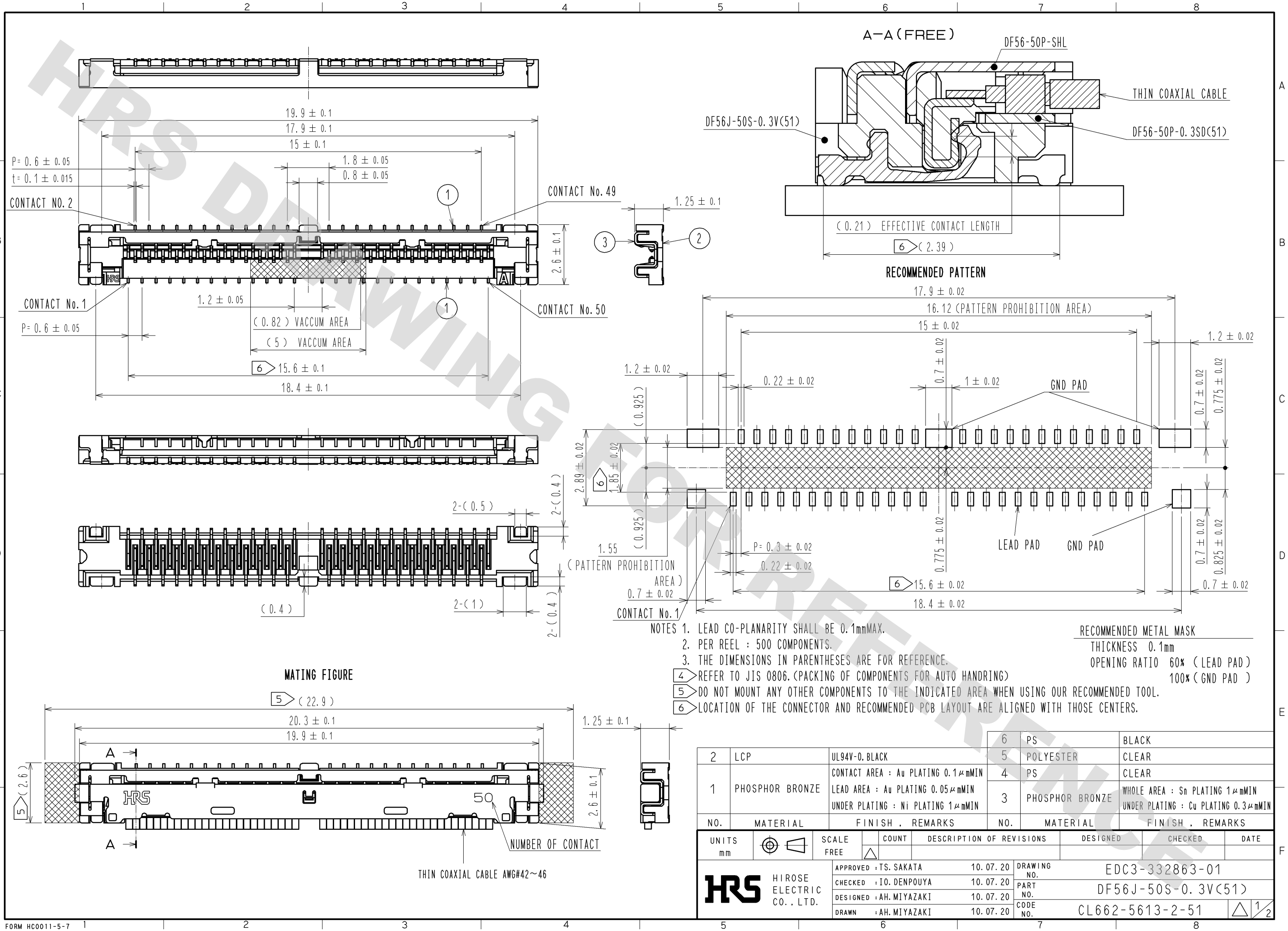
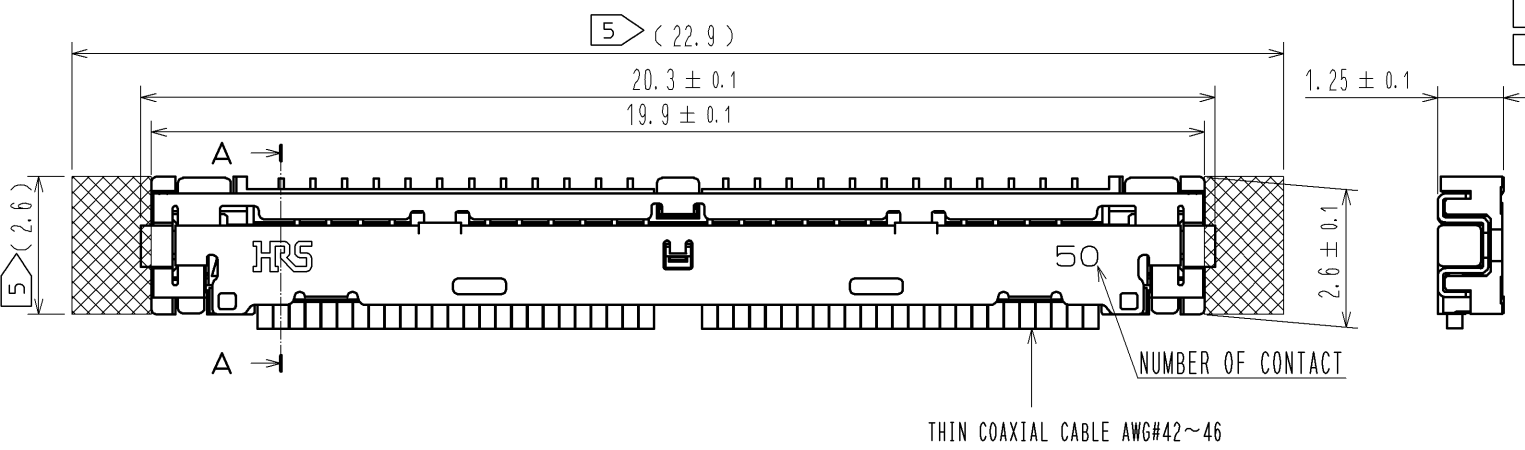


DRAWING FOR REFERENCE: This is subject to change without notice
08/11/2012



MATING FIGURE

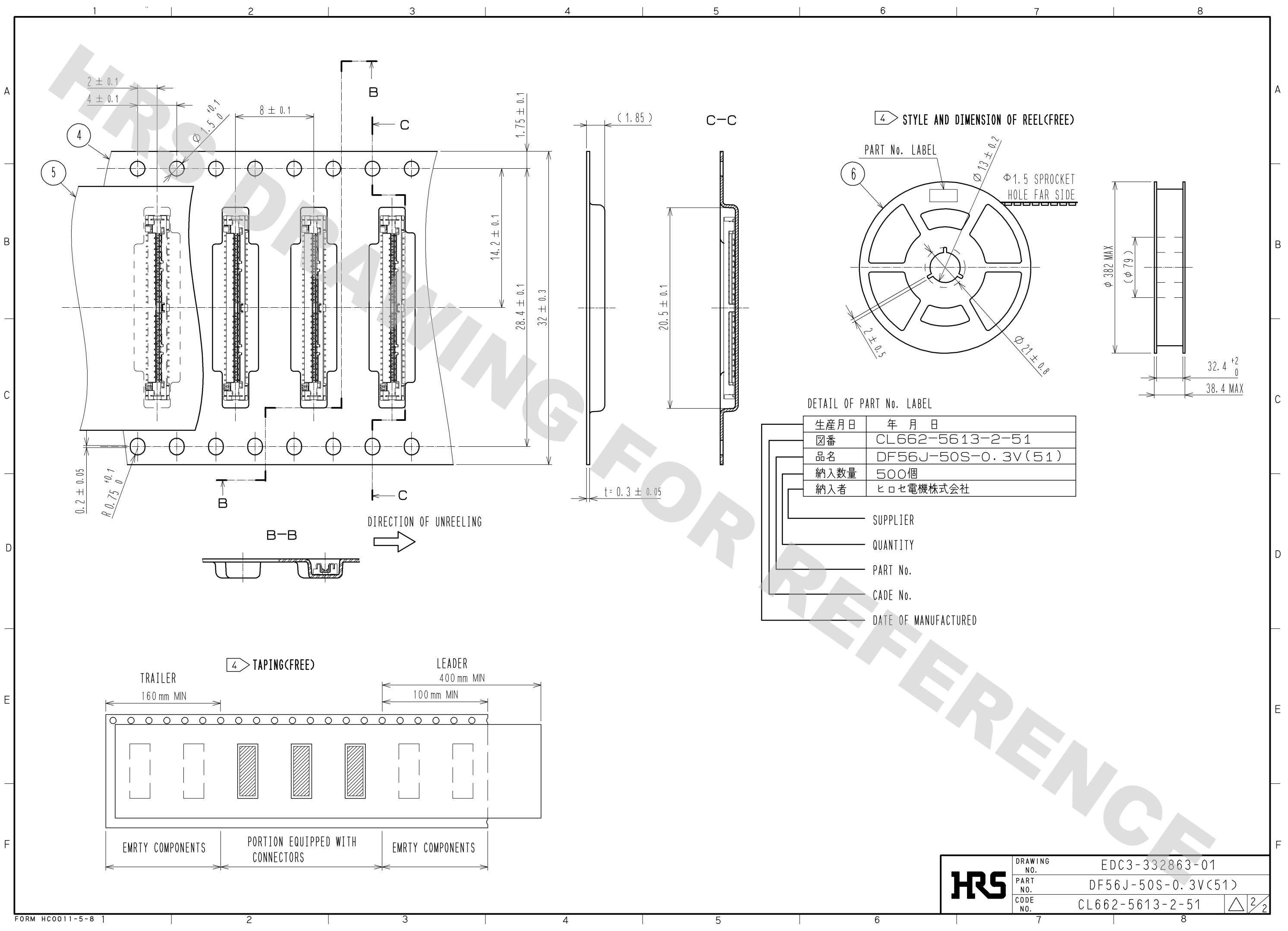


- NOTES
1. LEAD CO-PLANARITY SHALL BE 0.1mmMAX.
 2. PER REEL : 500 COMPONENTS.
 3. THE DIMENSIONS IN PARENTHESES ARE FOR REFERENCE.
 - 4 REFER TO JIS 0806. (PACKING OF COMPONENTS FOR AUTO HANDRING)
 - 5 DO NOT MOUNT ANY OTHER COMPONENTS TO THE INDICATED AREA WHEN USING OUR RECOMMENDED TOOL.
 - 6 LOCATION OF THE CONNECTOR AND RECOMMENDED PCB LAYOUT ARE ALIGNED WITH THOSE CENTERS.

RECOMMENDED METAL MASK
 THICKNESS 0.1mm
 OPENING RATIO 60% (LEAD PAD)
 100% (GND PAD)

2	LCP	UL94V-0. BLACK	6	PS	BLACK			
1	PHOSPHOR BRONZE	CONTACT AREA : Au PLATING 0.1μmMIN LEAD AREA : Au PLATING 0.05μmMIN UNDER PLATING : Ni PLATING 1μmMIN	5	POLYESTER	CLEAR			
			4	PS	CLEAR			
			3	PHOSPHOR BRONZE	WHOLE AREA : Sn PLATING 1μmMIN UNDER PLATING : Cu PLATING 0.3μmMIN			
NO.	MATERIAL	FINISH . REMARKS	NO.	MATERIAL	FINISH . REMARKS			
UNITS	mm	SCALE	FREE	COUNT	DESCRIPTION OF REVISIONS	DESIGNED	CHECKED	DATE
APPROVED : TS. SAKATA		10.07.20	DRAWING NO.		EDC3-332863-01			
CHECKED : IO. DENPOUYA		10.07.20	PART NO.		DF56J-50S-0.3V(51)			
DESIGNED : AH. MIYAZAKI		10.07.20	CODE NO.		CL662-5613-2-51			
DRAWN : AH. MIYAZAKI		10.07.20						

DRAWING FOR REFERENCE: This is subject to change without notice
08/11/2012



DETAIL OF PART No. LABEL

生産月日	年月日
図番	CL662-5613-2-51
品名	DF56J-50S-0.3V(51)
納入数量	500個
納入者	ヒロセ電機株式会社

- SUPPLIER
- QUANTITY
- PART No.
- CADE No.
- DATE OF MANUFACTURED

HRS	DRAWING NO.	EDC3-332863-01
	PART NO.	DF56J-50S-0.3V(51)
	CODE NO.	CL662-5613-2-51
		△ 2/2