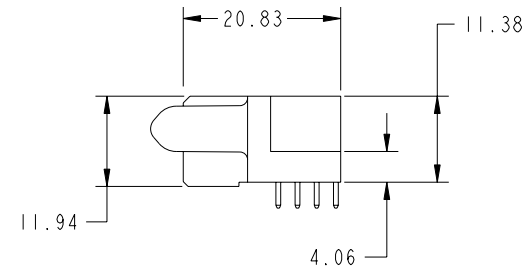
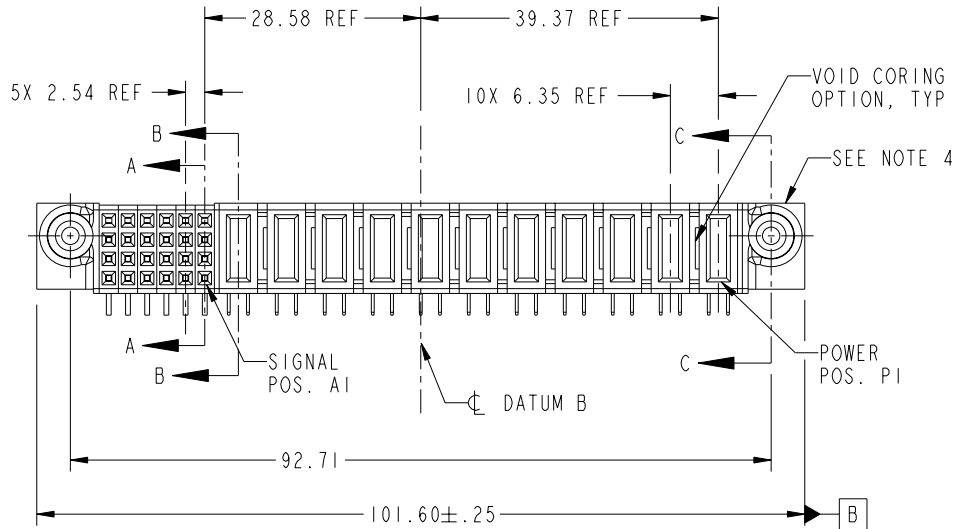
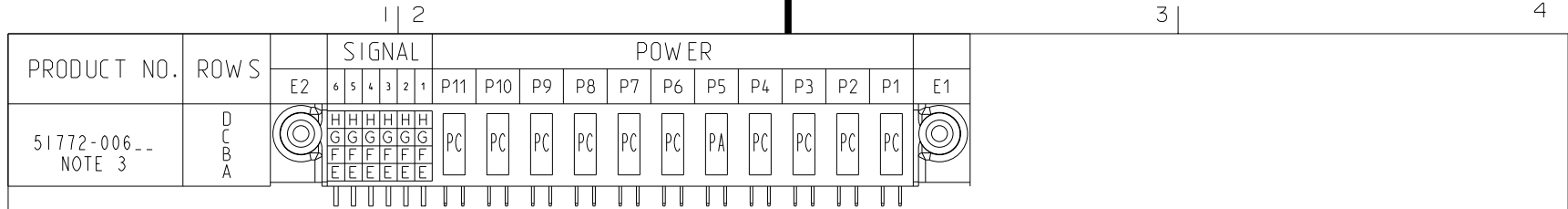


Tous droits strictement réservés. Reproduction ou communication o des tiers interdite sous quelque forme que ce soit sans autorisation écrite du propriétaire. Propriété de c FCI. Droits de reproduction FCI.

All rights strictly reserved. Reproduction or issue to third parties in any form whatever is not permitted without written authority from the proprietor. Property of FCI. Copyright FCI.



CODE	DIM "M" MATING LENGTH	CONTACT TYPE
PC	[2.34]	POWER
H	[N/A]	SIGNAL
G	[N/A]	SIGNAL
F	[N/A]	SIGNAL
E	[N/A]	SIGNAL
PA	[1.07]	POWER

mat'l code SEE NOTE 2				tolerances unless otherwise specified		CUSTOMER		FCI www.fciconnect.com	
ltr	ecn no.	dr	date	linear	0.X ± 0.3		COPY		title IIP + 24S R/A SOLDER RECEPTACLE
A	DG06-0438	JULIA	10/24/06		0.XX ± 0.13		projection		
				angles	0.XXX ± 0.051		MM		
				dr	JULIA WANG	10/24/06	scale		product family PwrBlade
				engr	RYAN YUAN	10/27/06	1:1		code 213
				chr	BEER FU	10/24/06	A		sheet 1 of 4
				appd	JOSEPH HSIA	10/24/06			
sheet index	revision sheet	A 1	A 2	A 3	A 4				

Pro/E

cage code 22526

PDM: Rev:A

STATUS: Released

Printed: Dec 20, 2010

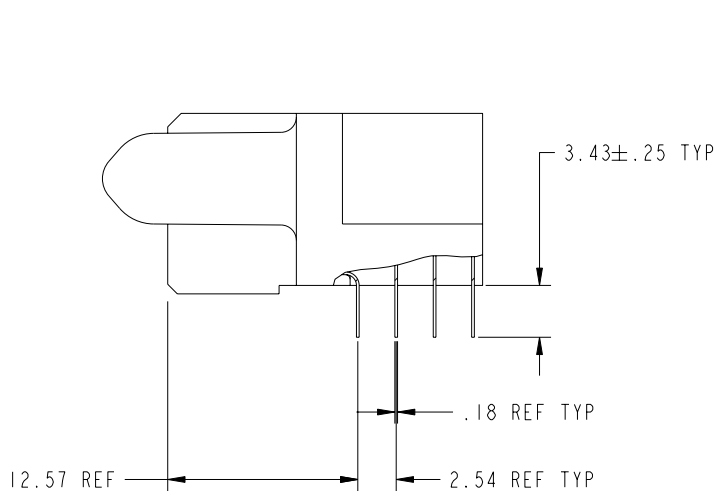
Tous droits strictement reserves. Reproduction ou communication a des tiers interdite sous quelque forme que ce soit sans autorisation ecrite du proprietaire. Propriete de c FCI. Droits de reproduction FCI.

All rights strictly reserved. Reproduction or issue to third parties in any form whatever is not permitted without written authority from the proprietor. Property of FCI. Copyright FCI.

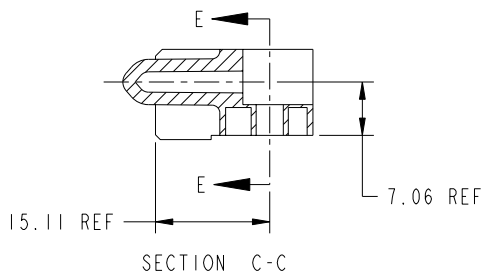


PRODUCT NUMBER

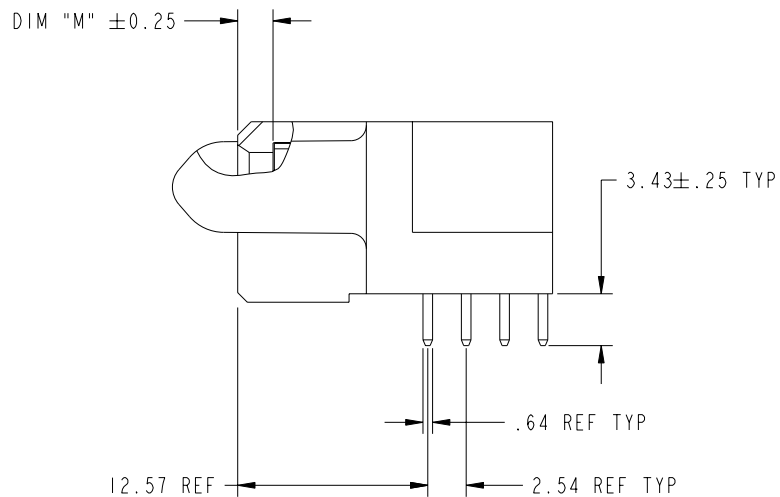
51772-006__
NOTE 3



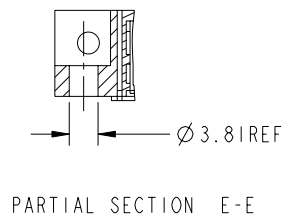
BROKEN-OUT SECTION A-A
SCALE 2:1



SECTION C-C



BROKEN-OUT SECTION B-B
SCALE 2:1



PARTIAL SECTION E-E

mat'l code		SEE NOTE 2		tolerances unless otherwise specified		CUSTOMER		FCI www.fciconnect.com			
ltr	ecn no.	dr	date	linear	0.X ± 0.3	COPY	projection	title			
A					0.XX ± 0.13				IIP + 24S R/A SOLDER RECEPTACLE		
				angles	0.XXX ± 0.051				product family		
				dr	0° ± 2°	JULIA WANG	10/24/06	MM	PwrBlade	code	
				enr		RYAN YUAN	10/27/06	← MM →	size	213	
				chr		BEER FU	10/24/06	scale	dwg no	sheet	
				appd		JOSEPH HSIA	10/24/06	1:1	A	51772-006	2 of 4
sheet index	revision sheet										

cage code 22526

Pro/E

PDM: Rev:A

STATUS: Released

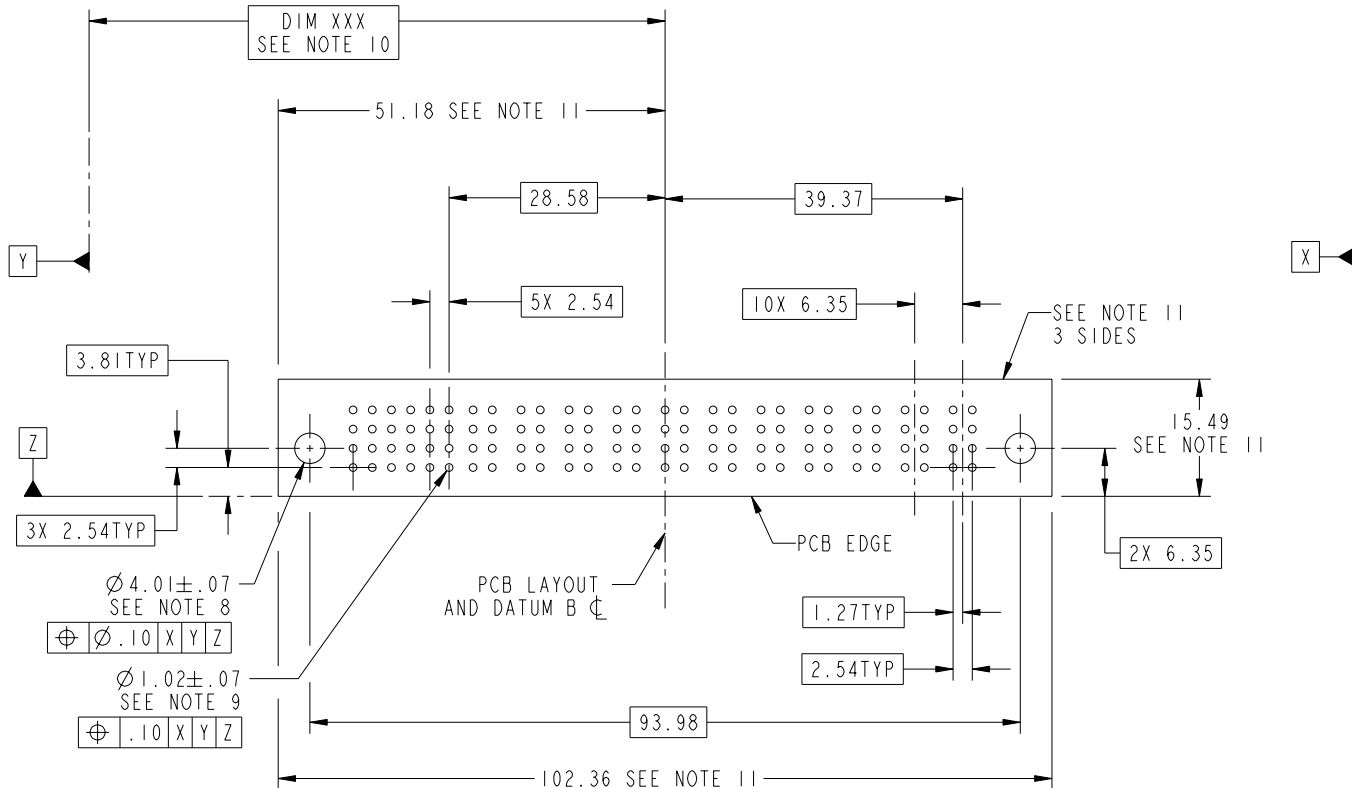
Printed: Dec 20, 2010

Tous droits strictement réservés. Reproduction ou communication o des tiers interdite sous quelque forme que ce soit sans autorisation écrite du propriétaire. Propriété de c FCI. Droits de reproduction FCI.



All rights strictly reserved. Reproduction or issue to third parties in any form whatever is not permitted without written authority from the proprietor. Property of FCI. Copyright FCI.

PRODUCT NUMBER
51772-006--
NOTE 3



mat'l code				SEE NOTE		tolerances unless otherwise specified		CUSTOMER		FCI www.fciconnect.com	
ltr	ecn no.	dr	date	linear		0.X ± 0.3	COPY		title		
A						0.XX ± 0.13	projection		IIP + 24S R/A SOLDER RECEPTACLE		
				angles		0.XXX ± 0.051			product family		
					dr	0° ± 2°			PwrBlade		code
					enr	JULIA WANG 10/24/06	MM		size	dwg no	213
					chr	RYAN YUAN 10/27/06	1:1		A	51772-006	sheet
					appd	BEER FU 10/24/06					3 of 4
						JOSEPH HSIA 10/24/06					
sheet index	revision sheet										

cage code 22526

Pro/E

PDM: Rev:A

STATUS: Released

Printed: Dec 20, 2010

Tous droits strictement réservés. Reproduction ou communication o des tiers interdite sous quelque forme que ce soit sans autorisation écrite du propriétaire. Propriété de c FCI. Droits de reproduction FCI.



All rights strictly reserved. Reproduction or issue to third parties in any form whatever is not permitted without written authority from the proprietor. Property of FCI. Copyright FCI.

PRODUCT NUMBER

51772-006__
NOTE 3

NOTES:

1. DIMENSIONS AND TOLERANCES ARE IN ACCORDANCE WITH ASME Y14.5M, 1994 UNLESS OTHERWISE SPECIFIED.

CONNECTOR NOTES:

HOUSING MATERIAL: UL 94 V-0 GLASS FILLED HIGH-TEMP THERMOPLASTIC

POWER CONTACT MATERIAL: COPPER ALLOY
SIGNAL PIN MATERIAL: COPPER ALLOY

3. PLATING:
51772-006, 51772-006LF PLATING SPEC. WAS SHOWN IN THE PRINT OF 10064183.

① MANUFACTURER'S NAME, P/N, AND DATE CODE TO APPEAR ON THIS SURFACE.

5. PRODUCT SPECIFICATION GS-12-149.
APPLICATION SPECIFICATION BUS-20-067.

6. PACKAGED IN TRAYS.

PCB NOTES:

7. ALL HOLE DIAMETERS ARE FINISHED HOLE SIZE.

① MOUNTING HOLES, WHERE APPLICABLE, ARE UNPLATED.

① $\varnothing 1.151 \pm 0.025$ DRILLED HOLES PLATED WITH 0.008 MIN SnPb OR Sn OVER 0.03 TO 0.08 Cu PLATING TO ACHIEVE $\varnothing 1.02 \pm 0.07$ HOLE.

① "DIM XXX" TO BE DETERMINED BY THE CUSTOMER.

① CONNECTOR KEEP-OUT ZONE.

mat'l code		SEE NOTE 2		tolerances unless otherwise specified		CUSTOMER		www.fciconnect.com	
ltr	ecn no.	dr	date	linear	$0.X \pm 0.3$	COPY		title	
A					$0.XX \pm 0.13$	projection		IIP + 24S R/A SOLDER RECEPTACLE	
				angles	$0.XXX \pm 0.051$			product family	
				dr	$0^\circ \pm 2^\circ$			PwrBlade	
				enr	JULIA WANG 10/24/06	scale		code	
				chr	RYAN YUAN 10/27/06	1:1		213	
				appd	BEER FU 10/24/06	A		sheet	
					JOSEPH HSIA 10/24/06			4 of 4	
sheet index	revision sheet								



www.fciconnect.com

MM

1:1

product family PwrBlade
size dwg no
A 51772-006

code 213
sheet 4 of 4

cage code 22526

Pro/E

PDM: Rev:A

STATUS: Released

Printed: Dec 20, 2010