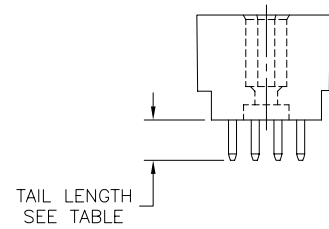
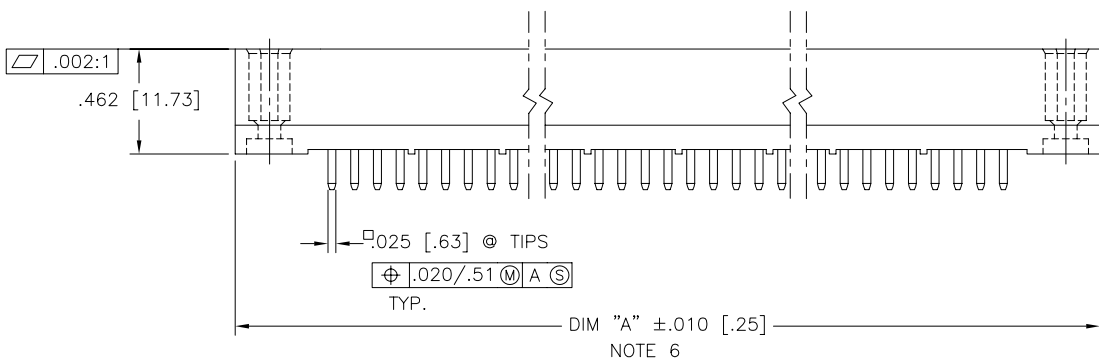
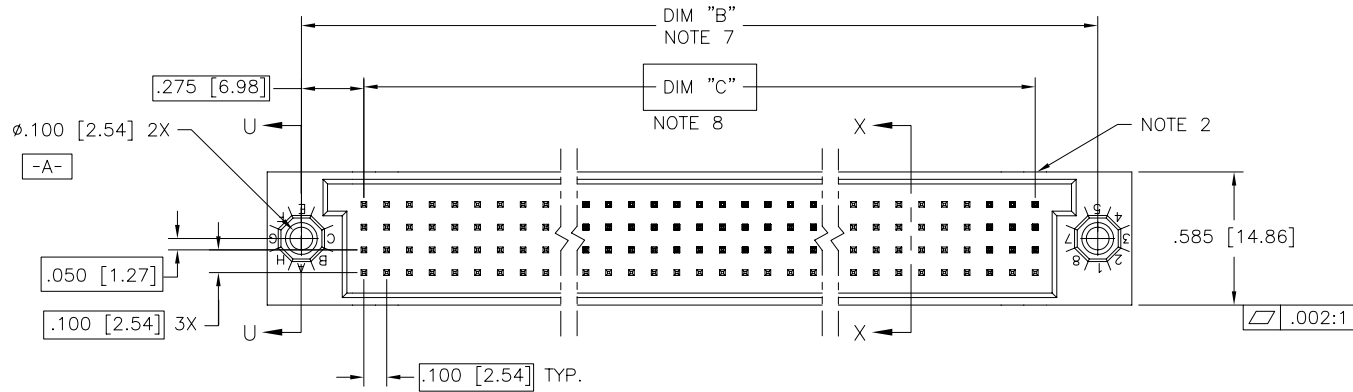


PRODUCT NUMBER
SEE TABLE

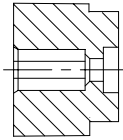


Copyright FCI

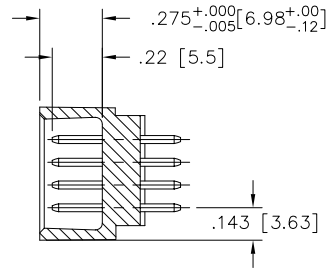
mat'l. code NOTE 4		surface ISO 1302 ✓	tolerance ISO 406 ISO 1101	projection INCH/MM	product family HPC
ltr	ecp no	dr	date	tolerances unless otherwise specified	title
K	v40941	PDP	6/1/94	angles	4 ROW VERTICAL HEADER
L	v90018	HTB	1/8/99	linear	W/SOLDER TAIL PINS, 0 G.P.
M	v00272	JWS	2/1/00	0'±2'	scale 1:1
N	v05-0475	DAI	7/20/05	dr	D.INGRAM 7/20/05
P	v05-0723	HTB	7/20/05	engr	D.HORCHLER 7/20/05
R	v05-1039	DAI	11/11/05	chr	T.BREWBAKER 7/20/05
S	M06-0283	MHT	7/27/06	appd	D.HORCHLER 7/20/05
sheet	revision	S	S	S	S
index	sheet	1	2	3	4
FCI logo					dwg no 50015
					sheet 1 of 4 size A3
					type Product Customer Drawing

form: A3

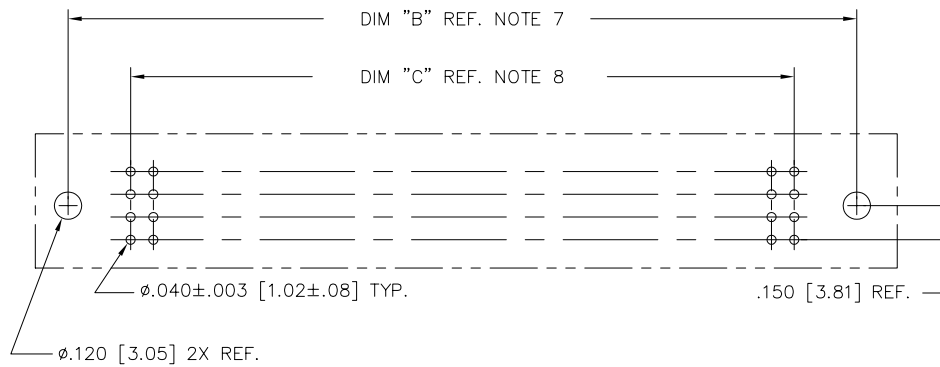
PRODUCT NUMBER
SEE TABLE



SECTION U-U



SECTION X-X



RECOMMENDED PCB LAYOUT
(ALL HOLES LOCATED ON .100/2.54 GRID
UNLESS OTHERWISE SPECIFIED)

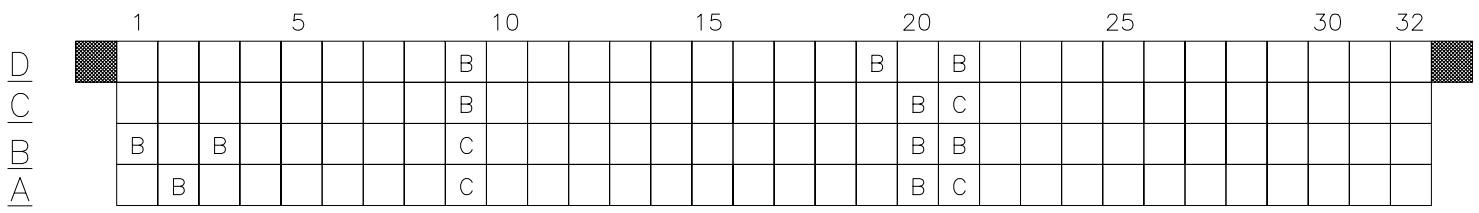
mat'l. code NOTE 4		surface ISO 1302 <input checked="" type="checkbox"/>	tolerance ISO 406 ISO 1101	projection 	product family HPC
ltr	ecn no	dr	date	tolerances unless otherwise specified	title
S				angles linear .xx±.01/.3 .xxx±.005/.13 0°±2' .xxxx±.0020/.051	4 ROW VERTICAL HEADER W/SOLDER TAIL PINS, 0 G.P.
		dr	D.INGRAM	7/20/05	dwg no
		enr	D.HORCHLER	7/20/05	sheet 2 of 4 size
		chr	T.BREWBAKER	7/20/05	50015 A3
		appd	D.HORCHLER	7/20/05	type Product Customer Drawing
sheet index	revision sheet				



Copyright FCJ

PRODUCT NUMBER
SEE TABLE

50015-XX022 AND 50015-XX022LF ONLY



PIN
1

NOTES FOR -XX022 AND -XX022LF ONLY:

- ALL POSITIONS ARE LOADED WITH "A" EXCEPT WHERE NOTED.
- COLUMN 1, ROW A IS DESIGNATED AS SIGNAL PIN 1, AS VIEWED FROM THE MATING FACE.
- SIGNAL DATA FOR 50015-XX022 AND 50015-XX022LF:
SIZE 4 x 32
TOTAL NO. OF POSITIONS - 128
NO. OF POSITIONS LOADED - 128

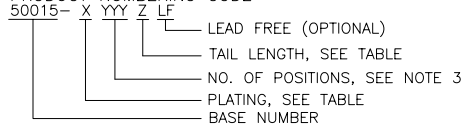
ITEM KEY	QTY.	MATING LENGTH
A	113	.180/4.57
B	11	.260/6.60
C	4	.220/5.59

mat'l. code NOTE 4		surface ISO 1302 <input checked="" type="checkbox"/>	tolerance ISO 406 ISO 1101	projection 	product family HPC
ltr	ecn no	dr	date	tolerances unless otherwise specified	title
S				angles linear .XX±.01/.3 linear .XXX±.005/.13 0'±2' .xxx±.0020/.051	4 ROW VERTICAL HEADER W/SOLDER TAIL PINS, 0 G.P.
				dr D.INGRAM 7/20/05 enr D.HORCHLER 7/20/05 chr T.BREWBAKER 7/20/05 app D.HORCHLER 7/20/05	scale 1:1 FCJ dwg no 50015 sheet 3 of 4 size A3
sheet index	revision sheet				type Product Customer Drawing

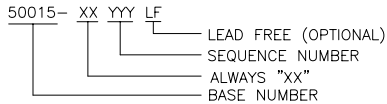
PRODUCT NUMBER	NUMBER OF POSITIONS NOTE 3	TAIL LENGTH ±.015/0.38	CONTACT PLATING
50015-1YYYA	YYY	.177/4.50	30u"/.76u Au
50015-1YYC	YY	.533/13.54	30u"/.76u Au
50015-1YYD	YY	.733/18.62	30u"/.76u Au
50015-1YYG	YY	.250/6.35	30u"/.76u Au
50015-1YYJ	YY	.120/3.05	30u"/.76u Au
50015-3YYYA	YYY	.177/4.50	50u"/1.27u Au
50015-3YYC	YY	.533/13.54	50u"/1.27u Au
50015-3YYD	YY	.733/18.62	50u"/1.27u Au
50015-3YYG	YY	.250/6.35	50u"/1.27u Au
50015-3YYJ	YY	.120/3.05	50u"/1.27u Au
50015-5YYYA	YYY	.177/4.50	30u"/.76u GXT
50015-5YYALF	YY	.177/4.50	30u"/.76u GXT
50015-5YYC	YY	.533/13.54	30u"/.76u GXT
50015-5YYCLF	YY	.533/13.54	30u"/.76u GXT
50015-5YYD	YY	.733/18.62	30u"/.76u GXT
50015-5YYDLF	YY	.733/18.62	30u"/.76u GXT
50015-5YYG	YY	.250/6.35	30u"/.76u GXT
50015-5YYGLF	YY	.250/6.35	30u"/.76u GXT
50015-5YYJ	YY	.120/3.05	30u"/.76u GXT
50015-5YYJLF	YY	.120/3.05	30u"/.76u GXT
50015-XX022	128	.250/6.35	30u"/.76u Au
50015-XX022LF	128	.250/6.35	30u"/.76u GXT

NOTES:


1. PRODUCT NUMBERING CODE



PRODUCT NUMBERING CODE FOR SELECT LOAD



- ② MANUFACTURE'S LOGO, PN, AND LOT CODE TO APPEAR ON THIS SURFACE.
- ③ THIS PRODUCT IS CONFIGURED IN SIZES OF 6 THRU 80 COLUMNS IN INCREMENTS OF ONE, I.E. 6, 7, 8, 9,79, 80.
- ④ MATERIAL:
HOUSING - GLASS AND MINERAL FILLED HIGH TEMPERATURE THERMOPLASTIC, FLAME RETARDANT PER UL94V-0. COLOR-BLACK
CONTACT - PHOS BRONZE
- 5. PLATING:
CONTACT AREA - SEE PRODUCT NUMBER TABLE
TAILS-EITHER TIN OR TIN LEAD, SEE PRODUCT NUMBER TABLE
- ⑥ DIMENSION "A" CALCULATION = .100 (2.54) X NO. OF COLUMNS + .75 (19.1)
- ⑦ DIMENSION "B" CALCULATION = .100 (2.54) X NO. OF COLUMNS + .450(11.43)
- ⑧ DIMENSION "C" CALCULATION = .100 (2.54) X NO. OF COLUMNS - .100(2.54)
- 9. ALL POSITIONS ARE LOADED EXCEPT FOR -XXYYY ASSEMBLIES WHICH HAVE SELECTIVE LOADING.
- 10. THIS PRODUCT (WITH "LF" SUFFIX) MEETS EUROPEAN UNION DIRECTIVES AND OTHER COUNTRY REGULATIONS AS DESCRIBED IN GS-22-008.
- 11. THIS HOUSING WILL WITHSTAND EXPOSURE TO 260°C PEAK TEMPERATURE FOR 10-30 SECONDS IN A CONVECTION, INFRA-RED OR VAPOR PHASE REFLOW OVEN.

mat'l. code		surface		tolerance		projection		product family	
NOTE 4		ISO 1302 ✓		ISO 406		⊕		HPC	
				ISO 1101					
ltr	ecn	no	dr	tolerances unless otherwise specified		INCH/MM		title	
S				angles	linear	.XX±.01/.3		4 ROW VERTICAL HEADER	
				0'±2'		.XXX±.005/.13		W/SOLDER TAIL PINS, 0 G.P.	
						.XXXX±.0020/.051		scale 1:1	
			dr	D.INGRAM	7/20/05			dwg no	
			enr	D.HORCHLER	7/20/05			sheet 4 of 4 size	
			chr	T.BREWBAKER	7/20/05			50015	
			appd	D.HORCHLER	7/20/05			A3	
sheet index		revision sheet						type Product Customer Drawing	

Copyright FCI
 FCIconnect.com