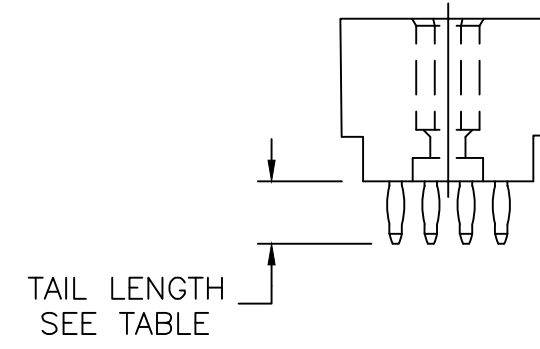
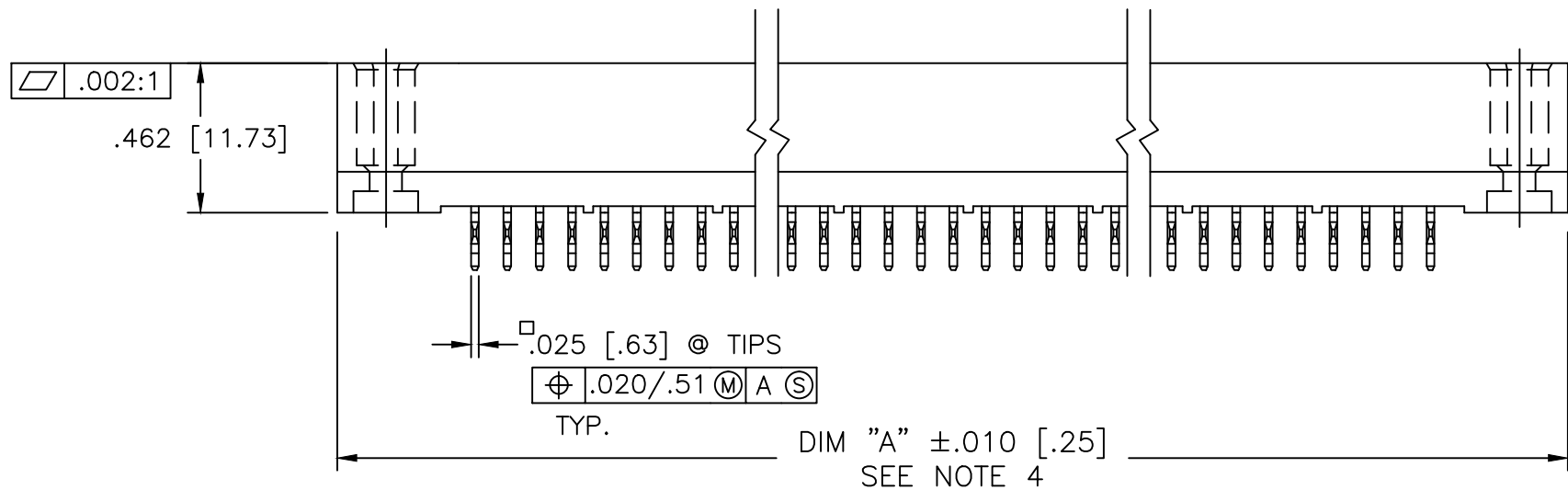
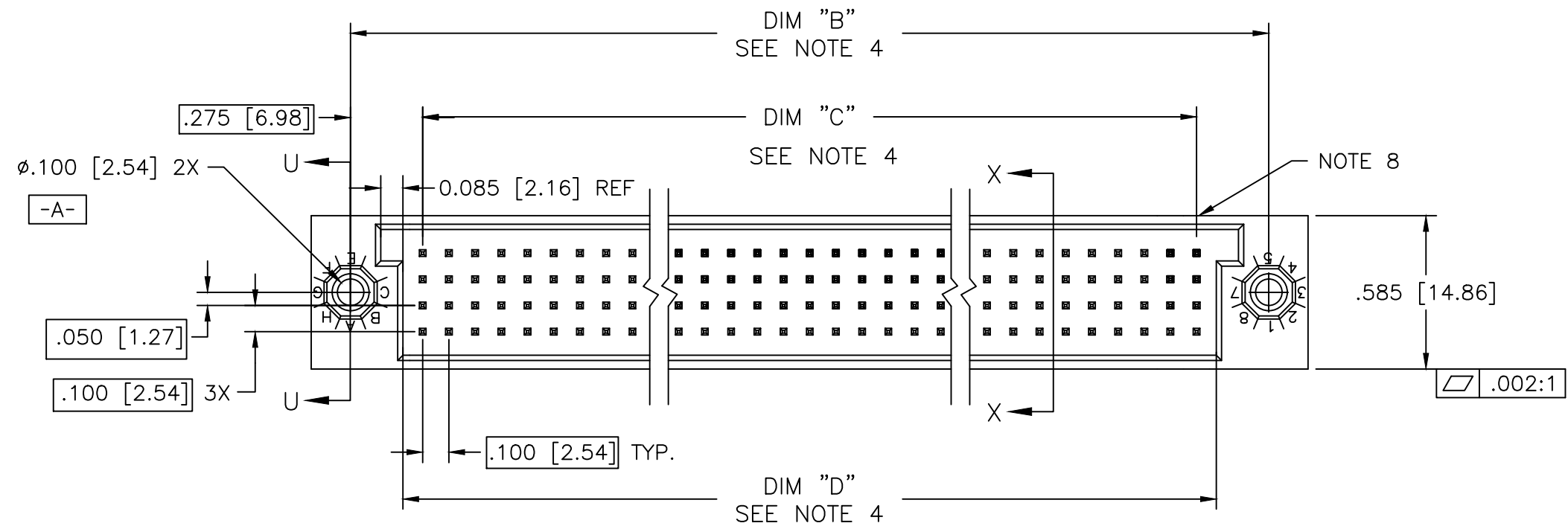


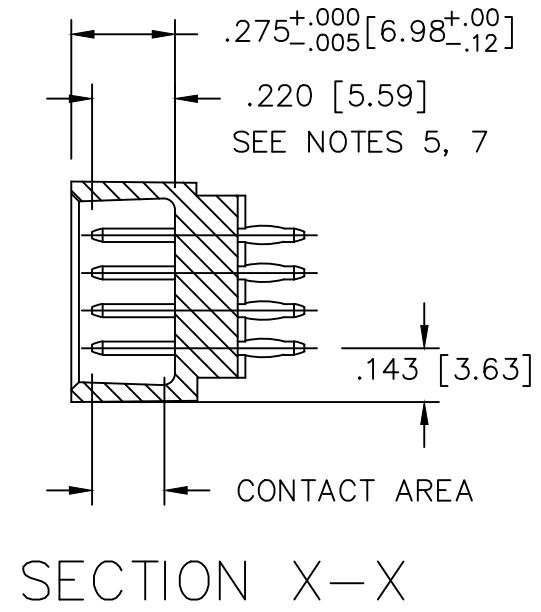
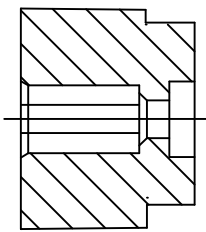
PRODUCT NUMBER
SEE TABLE AND NOTES 1 & 2 ONSHEET 3



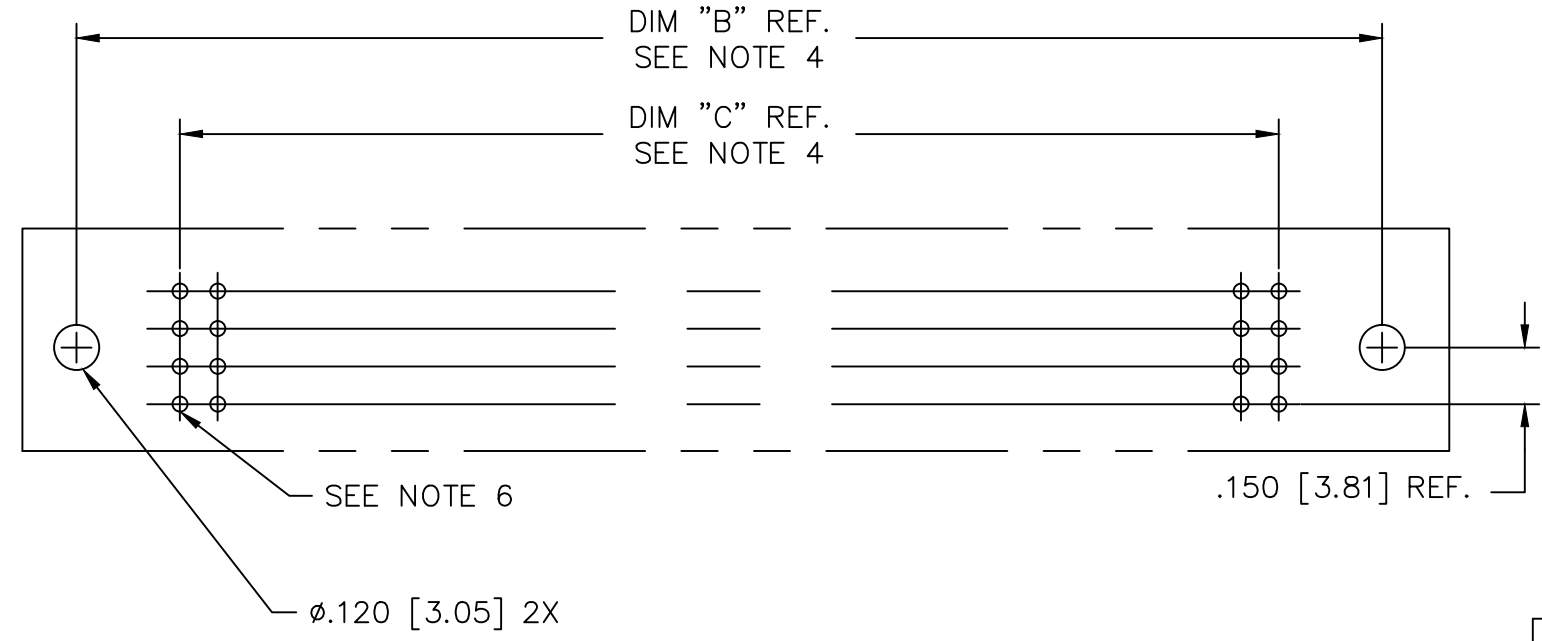
mat'l. code SEE NOTE 3				surface ISO 1302 ✓		tolerance ISO 406 ISO 1101		projection INCH/MM scale 1:1		product family HPC									
ltr	ecn no	dr	date	tolerances unless otherwise specified						title 4 ROW VERTICAL HEADER W/PRESS-FIT PINS, 0 G.P.									
S	I11-0094	SAL	2011-05-23	angles	linear	.XX±.01/.3				dwg no 50009 sheet 1 of 14 size A3									
T	ELX-I-13738	MJA	2012-12-21			.XXX±.005/.13													
U	ELX-I-16877	MJA	2014-01-29	0°±2'	.XXX±.0020/.051				type Product Customer Drawing										
-		-		dr	D.HORCHLER	2005-06-29													
N		V05-0999	DAI	10/29/05	enr	D.HORCHLER	2005-06-29												
P		M06-0283	MHT	7/27/06	chr	M JACOB	2014-01-29												
R		M06-0447	AGS	11/07/06	appd	BIJU K PAUL	2014-01-29												
sheet	revision	U	U	U	U	U	U	U	U	U	U	U	U	U	U	U	U	U	U
index	sheet	1	2	3	4	5	6	7	8	9	10	11	12	13	14				

PRODUCT NO.
SEE TABLE

SECTION U-U



SECTION X-X



RECOMMENDED PCB LAYOUT
(ALL HOLES LOCATED ON .100/2.54 GRID
UNLESS OTHERWISE SPECIFIED)

mat'l. code SEE NOTE 3		surface ISO 1302 ✓	tolerance ISO 406 ISO 1101	projection INCH/MM	product family HPC
ltr U	ecn no	dr	date	tolerances unless otherwise specified angles linear 0°±2'	title 4 ROW VERTICAL HEADER W/PRESS-FIT PINS, 0 G.P.
				.XX±.01/.3 .XXX±.005/.13 .XXX±.0020/.051	scale 1:1
		dr	D.HORCHLER	2005-06-21	dwg no 50009
		enr	D.HORCHLER	2005-06-21	sheet 2 of 14 size A3
		chr	M JACOB	2014-01-29	type Product Customer Drawing
		appd	BIJU K PAUL	2014-01-29	
sheet index	revision sheet				

PRODUCT NO. NOTE 11	NUMBER OF POSITIONS	TAIL LENGTH ±.015/.38	CONTACT PLATING
50009-1YYA	YYY	.177/4.50	30μ"/.76μ Au
50009-1YYC	YYY	.533/13.54	30μ"/.76μ Au
50009-1YYD	YYY	.733/18.62	30μ"/.76μ Au
50009-1YYG	YYY	.250/6.35	30μ"/.76μ Au
50009-1YYL	YYY	.188/4.78	30μ"/.76μ Au
50009-1YYP	YYY	.470/11.94	30μ"/.76μ Au
50009-1YYR	YYY	.250/6.35	30μ"/.76μ Au
50009-3YYA	YYY	.177/4.50	50μ"/1.27μ Au
50009-3YYC	YYY	.533/13.54	50μ"/1.27μ Au
50009-3YYD	YYY	.733/18.62	50μ"/1.27μ Au
50009-3YYG	YYY	.250/6.35	50μ"/1.27μ Au
50009-3YYL	YYY	.188/4.78	50μ"/1.27μ Au
50009-3YYP	YYY	.470/11.94	50μ"/1.27μ Au
50009-3YYR	YYY	.250/6.35	50μ"/1.27μ Au
50009-5YYA	YYY	.177/4.50	30μ"/.76μ GXT
50009-5YYC	YYY	.533/13.54	30μ"/.76μ GXT
50009-5YYD	YYY	.733/18.62	30μ"/.76μ GXT
50009-5YYG	YYY	.250/6.35	30μ"/.76μ GXT
50009-5YYL	YYY	.188/4.78	30μ"/.76μ GXT
50009-5YYP	YYY	.470/11.94	30μ"/.76μ GXT
50009-5YYR	YYY	.250/6.35	30μ"/.76μ GXT
50009-XX005	100	.177/4.50	50μ"/1.27μ Au
50009-XX034	300	.533/13.54	30μ"/.76μ GXT
50009-XX067	100	.177/4.50	50μ"/1.27μ Au
50009-XX076	200	.177/4.50	30μ"/.76μ Au
50009-XX124	140	.603/15.32	50μ"/1.27μ Au
50009-XX187	400	SEE SHT 9	30μ"/.76μ Au
50009-XX188	320	SEE SHT 10	50μ"/1.27μ GXT
50009-XX189	320	SEE SHT 11	50μ"/1.27μ GXT
50009-8YYG	YYY	.250/6.35	30μ"/.76μ Au
50009-XX190	220	SEE SHT 12	30μ"/.76μ GXT
50009-XX191	140	SEE SHT 13	30μ"/.76μ GXT
50009-XX192	140	SEE SHT 14	30μ"/.76μ GXT

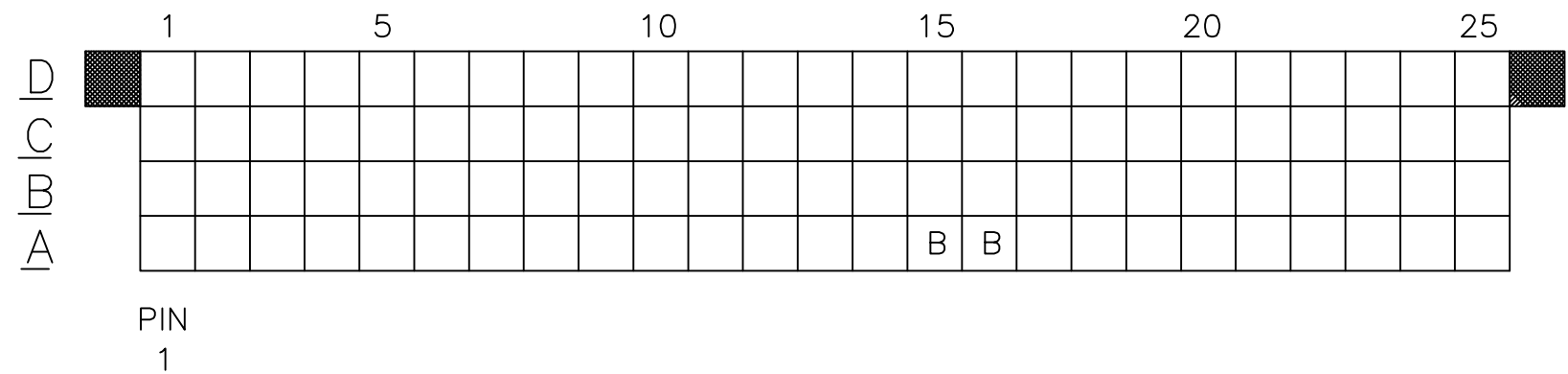
SHT 4
SHT 5
SHT 6
SHT 7
SHT 8
SHT 9
SHT 10
SHT 11
SEE ALSO NOTE 12
SHT 12
SHT 13
SHT 14

NOTES:

- ① PRODUCT NUMBERING CODE:
50009 - X YYY Z LF
LEAD FREE OPTION
TAIL LENGTH, SEE TABLE
NO. OF POSITIONS SEE NOTE 2
PLATING IN CONTACT AREA SEE TABLE
BASE NUMBER
- PRODUCT NUMBERING CODE FOR
SELECT LOAD PART NUMBERS:
50009 - XXYYY LF
LEAD FREE OPTION
SEQUENCE NUMBER
ALWAYS 'XX'
BASE NUMBER
- ② THIS PRODUCT IS CONFIGURED IN SIZES OF 6 thru 100
COLUMNS IN INCREMENTS OF ONE.
i.e.: 6,7,8,9,.....99,100.
- ③ HOUSING MATERIAL: GLASS AND MINERAL FILLED
HIGH TEMP. THERMOPLASTIC. FLAME RETARDANT PER
UL94V-0. COLOR: BLACK.
PIN MATERIAL: PHOS BRONZE
- ④ LENGTH CALCULATIONS:
DIMENSION "A" = .100/2.54 x NO. OF COLUMNS + .75/19.1
DIMENSION "B" = .100/2.54 x NO. OF COLUMNS + .450/11.43,
DIMENSION "C" = .100/2.54 x NO. OF COLUMNS - .100/2.54
DIMENSION "D" = .100/2.54 x NO. OF COLUMNS + .050/1.27
- ⑤ REFERENCE 50807 FOR F.M.L.B. AVAILABLE OPTIONS. SEE SHEETS 4-9.
AND WORKSHEET.
- ⑥ ø.0453/1.151 DRILLED HOLE PLATED WITH .0003/.007 MIN.
SnPb OVER .001/.03 to .003/.08 Cu. PLATING TO ACHIEVE
A ø.040±.003/1.02±.08 HOLE.
- ⑦ TO ASSURE PROPER INSTALLATION: TOOLING, AS
SPECIFIED IN INSTRUCTION MANUAL 155915-001 MUST
BE USED. PIN MATING LENGTH WILL BE ±.002/.05
AFTER INSTALLATION.
- ⑧ COMPANY NAME, PART NUMBER AND LOT CODE TO APPEAR ON
THIS SURFACE PER BUS-12-108.
- ⑨ PRODUCT WITH "LF" SUFFIX MEETS EUROPEAN UNION DIRECTIVES AND
OTHER COUNTRY REGULATIONS AS DESCRIBED IN GS-22-008.
- ⑩ THIS PRODUCT IS NOT INTENDED TO BE EXPOSED TO A MANUFACTURING
SOLDER PROCESS. HOWEVER, THE HOUSING MATERIAL WILL WITHSTAND
HEAT UP TO THE 260° C.
- ⑪ ADD LF SUFFIX AT THE END OF PART NUMBER FOR LEAD FREE OPTION.
- ⑫ TERMINAL PORTION OF THE CONNECTOR TO BE LUBED BEFORE PACKING.

mat'l. code SEE NOTE 3		surface ISO 1302 ✓	tolerance ISO 406 ISO 1101	projection 	product family HPC
ltr	ecn no	dr	date	tolerances unless otherwise specified	title
U				angles linear .XX±.01/.3 .XXX±.005/.13 0°±2' .XXX±.0020/.051	4 ROW VERTICAL HEADER W/PRESS-FIT PINS, 0 G.P.
				dr D.HORCHLER 2005-06-29	dwg no 50009
				enr D.HORCHLER 2005-06-29	sheet 3 of 14 size A3
				chr M JACOB 2014-01-29	type Product Customer Drawing
				appd BIJU K PAUL 2014-01-29	
sheet index	revision sheet				

PRODUCT NO.	ITEM KEY	SIGNAL DATA			
		SIZE 4 x 25	TOTAL NO. OF POSITIONS -100	NO. OF POSITIONS LOADED - 100	
		PRESS FIT STYLE			
		PLATING	QTY.	MATING LENGTH	TAIL LENGTH
50009-XX005	A	SEE SHEET 3	98	.220 / 5.59	.177 / 4.50
	B	SEE SHEET 3	2	.260 / 6.60	.177 / 4.50
50009-XX005LF	A	SEE SHEET 3	98	.220 / 5.59	.177 / 4.50
	B	SEE SHEET 3	2	.260 / 6.60	.177 / 4.50



1. ALL POSITIONS ARE LOADED WITH "A", EXCEPT AS SHOWN.
2. COLUMN 1, ROW A IS DESIGNATED AS SIGNAL PIN 1, AS VIEWED FROM THE MATING FACE.

mat'l. code SEE NOTE 3		surface ISO 1302 ✓	tolerance ISO 406 ISO 1101	projection 	product family HPC
ltr U	ecn no	dr	date	tolerances unless otherwise specified angles linear .XX±.01/.3 .XXX±.005/.13 0°±2' .XXX±.0020/.051	INCH/MM scale 1:1
dr	D.HORCHLER		2005-06-29		title 4 ROW VERTICAL HEADER W/PRESS-FIT PINS, 0 G.P.
enr	D.HORCHLER		2005-06-29		dwg no 50009
chr	M JACOB		2014-01-29		sheet 4 of 14 size A3
appd	BIJU K PAUL		2014-01-29		type Product Customer Drawing
sheet index	revision sheet				

PRODUCT NO.	ITEM KEY	SIGNAL DATA			
		SIZE 4 x 75	TOTAL NO. OF POSITIONS -300	NO. OF POSITIONS LOADED - 300	
		PLATING	QTY.	PRESS FIT STYLE	
				MATING LENGTH	TAIL LENGTH
50009-XX034	A	SEE SHEET 3	260	.180 / 4.57	.533 / 13.54
	B	SEE SHEET 3	40	.220 / 5.59	.533 / 13.54
50009-XX034LF	A	SEE SHEET 3	260	.180 / 4.57	.533 / 13.54
	B	SEE SHEET 3	40	.220 / 5.59	.533 / 13.54

	1	5	10	15	20	25	30	35	40											
D	B	B	B						B	B					B					
C	B	B	B												B	B				B
B	B	B													B	B				B
A	B	B	B												B	B				B

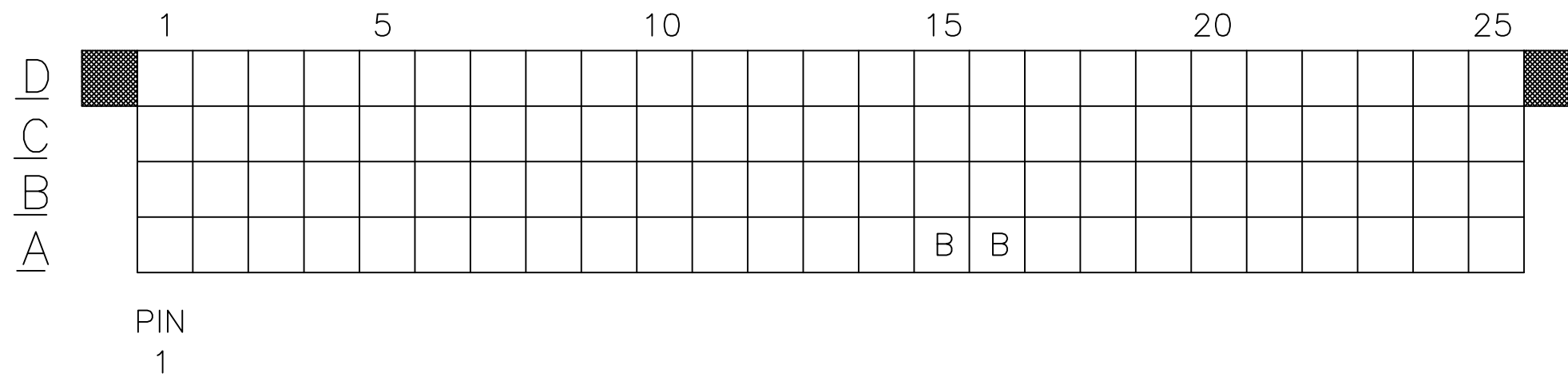
PIN
1

	41	45	50	55	60	65	70	75		
B								B	B	B
B								B	B	B
B								B	B	B
B								B	B	B

- ALL POSITIONS ARE LOADED WITH "A", EXCEPT AS SHOWN.
- COLUMN 1, ROW A IS DESIGNATED AS SIGNAL PIN 1, AS VIEWED FROM THE MATING FACE.

mat'l. code SEE NOTE 3		surface ISO 1302	tolerance ISO 406 ISO 1101	projection 	product family HPC
ltr U	ecn no	dr	date	tolerances unless otherwise specified angles linear 0°±2'	title 4 ROW VERTICAL HEADER W/PRESS-FIT PINS, 0 G.P.
				dr D.HORCHLER 2005-06-29 engr D.HORCHLER 2005-06-29 chr M JACOB 2014-01-29 appd BIJU K PAUL 2014-01-29	scale 1:1
sheet index	revision sheet				dwg no 50009 sheet 5 of 14 size A3 type Product Customer Drawing

PRODUCT NO.	ITEM KEY	SIGNAL DATA		
		SIZE 4 x 25	TOTAL NO. OF POSITIONS -100	NO. OF POSITIONS LOADED - 100
		CONTACT PLATING	QTY.	MATING LENGTH
50009-XX067	A	SEE SHEET 3	98	.200 / 5.08
	B	SEE SHEET 3	2	.240 / 6.10
50009-XX067LF	A	SEE SHEET 3	98	.200 / 5.08
	B	SEE SHEET 3	2	.240 / 6.10



1. ALL POSITIONS ARE LOADED WITH "A", EXCEPT AS SHOWN.
2. COLUMN 1, ROW A IS DESIGNATED AS SIGNAL PIN 1, AS VIEWED FROM THE MATING FACE.

mat'l. code SEE NOTE 3		surface ISO 1302 ✓	tolerance ISO 406 ISO 1101	projection 	product family HPC
ltr U	ecn no	dr	date	tolerances unless otherwise specified angles linear .XX±.01/.3 0°±2' .XXX±.005/.13 .XXX±.0020/.051	title 4 ROW VERTICAL HEADER W/PRESS-FIT PINS, 0 G.P.
dr		D.HORCHLER 2005-06-29		 INCH/MM scale 1:1	sheet 6 of 14 size
enr		D.HORCHLER 2005-06-29			50009 A3
chr		M JACOB 2014-01-29			type Product Customer Drawing
appd		BIJU K PAUL 2014-01-29			
sheet index	revision sheet				

PRODUCT NO.	ITEM KEY	SIGNAL DATA				
		SIZE 4 x 50	TOTAL NO. OF POSITIONS - 200	NO. OF POSITIONS LOADED - 200		
		PIN PLATING	QTY.	MATING LENGTH	TAIL LENGTH	TOTAL PIN LENGTH
50009-XX076	A	SEE SHEET 3	130	.230 / 5.84	.177 / 4.50	.595 / 15.11
	B	SEE SHEET 3	68	.270 / 6.86	.177 / 4.50	.634 / 16.10
	C	SEE SHEET 3	2	.190 / 4.83	.177 / 4.50	.555 / 14.10
50009-XX076LF	A	SEE SHEET 3	130	.230 / 5.84	.177 / 4.50	.595 / 15.11
	B	SEE SHEET 3	68	.270 / 6.86	.177 / 4.50	.634 / 16.10
	C	SEE SHEET 3	2	.190 / 4.83	.177 / 4.50	.555 / 14.10

	1	5	10	15	20	25	30	35	40	45	50	
D	B	C	B	B	B	B	B	B	B	B	B	C
C	B	B	B	B	B	B	B	B	B	B	B	B
B	B	B	B	B	B	B	B	B	B	B	B	B
A	B	B	B	B	B	B	B	B	B	B	B	B

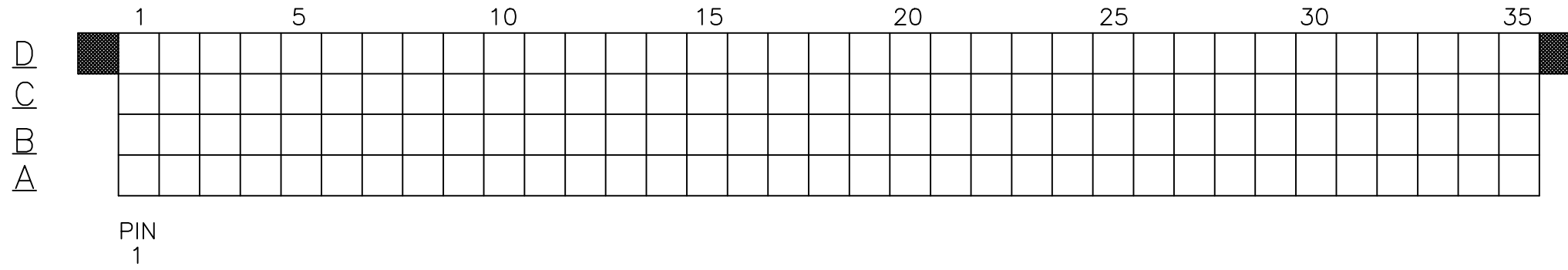
PIN
1

1. ALL POSITIONS ARE LOADED WITH "A", EXCEPT AS SHOWN.
2. COLUMN 1, ROW A IS DESIGNATED AS SIGNAL PIN 1, AS VIEWED FROM THE MATING FACE.

mat'l. code SEE NOTE 3		surface ISO 1302 ✓	tolerance ISO 406 ISO 1101	projection 	product family HPC
ltr U	ecn no	dr	date	tolerances unless otherwise specified angles linear .XX±.01/.3 0°±2° .XXX±.005/.13 .XXX±.0020/.051	INCH/MM scale 1:1
dr	D.HORCHLER	2005-06-29			title 4 ROW VERTICAL HEADER W/PRESS-FIT PINS, 0 G.P.
enr	D.HORCHLER	2005-06-29			dwg no 50009
chr	M JACOB	2014-01-29			sheet 7 of 14 size A3
appd	BIJU K PAUL	2014-01-29			type Product Customer Drawing
sheet index	revision sheet				



PRODUCT NO.	SIGNAL DATA				
	SIZE 4 x 35	TOTAL NO. OF POSITIONS -140	NO OF POSITIONS LOADED - 140		
	ITEM KEY	PINS: PLATING:	QUANTITY	MATING LENGTH	TAIL LENGTH
50009-XX124	A	SEE SHEET 3	140	.220 / 5.59	.603 / 15.32
50009-XX124LF	A	SEE SHEET 3	140	.220 / 5.59	.603 / 15.32



1. ALL POSITIONS ARE LOADED WITH "A".
2. COLUMN 1 ROW A IS DESIGNATED AS SIGNAL PIN 1, AS VIEWED FROM THE MATING FACE.

mat'l. code SEE NOTE 3		surface ISO 1302	tolerance ISO 406 ISO 1101	projection 	product family HPC
ltr U	ecn no	dr	date	tolerances unless otherwise specified angles linear 0°±2'	title 4 ROW VERTICAL HEADER W/PRESS-FIT PINS, 0 G.P.
				.XX±.01/.3 .XXX±.005/.13 .XXX±.0020/.051	INCH/MM scale 1:1
		dr	D.HORCHLER	2005-06-29	dwg no 50009
		enr	D.HORCHLER	2005-06-29	sheet 8 of 14 size A3
		chr	M JACOB	2014-01-29	type Product Customer Drawing
		appd	BIJU K PAUL	2014-01-29	
sheet index	revision sheet				



Copyright FCI

PRODUCT NUMBER	ITEM KEY	SIGNAL DATA			
		SIZE 4 x 50	TOTAL NO. OF POSITIONS -200	NO. OF POSITIONS LOADED - 200	
		PRESS FIT STYLE			
		PIN PLATING	QTY.	MATING LENGTH	TAIL LENGTH
50009-XX187	A	SEE SHEET 3	85	.220 / 5.59	.561 / 14.25
	B	SEE SHEET 3	1	.180 / 4.57	.521 / 13.23
	C	SEE SHEET 3	8	.260 / 6.60	.601 / 15.27
	D	SEE SHEET 3	106	.220 / 5.59	.177 / 4.50
50009-XX187LF	A	SEE SHEET 3	85	.220 / 5.59	.561 / 14.25
	B	SEE SHEET 3	1	.180 / 4.57	.521 / 13.23
	C	SEE SHEET 3	8	.260 / 6.60	.601 / 15.27
	D	SEE SHEET 3	106	.220 / 5.59	.177 / 4.50

	1	5	10	15	20	25
<u>D</u>	A	A	A	A	A	A
<u>C</u>	A	A	C	A	A	A
<u>B</u>	A	A	C	A	A	C
<u>A</u>	A	A	A	A	A	A

PIN
1

	26	30	35	40	45	50
	A	A	A	A	A	A
		A	A	A	A	C
	A	A	A	A	A	C
	A	A	A	A	A	

- ALL POSITIONS ARE LOADED WITH "D" EXCEPT AS SHOWN.
- COLUMN 1, ROW A IS DESIGNATED AS SIGNAL PIN 1, AS VIEWED FROM THE MATING FACE.

mat'l. code SEE NOTE 3		surface ISO 1302 ✓	tolerance ISO 406 ISO 1101	projection 	product family HPC
ltr	ecn no	dr	date	tolerances unless otherwise specified	title
U				angles 0°±2'	4 ROW VERTICAL HEADER W/PRESS-FIT PINS, 0 G.P.
				linear .XX±.01/.3 .XXX±.005/.13 .XXX±.0020/.051	INCH/MM scale 1:1
		dr	D.HORCHLER	2005-06-29	dwg no
		enr	D.HORCHLER	2005-06-29	sheet 9 of 14 size
		chr	M JACOB	2014-01-29	50009 A3
		appd	BIJU K PAUL	2014-01-29	type Product Customer Drawing
sheet index	revision sheet				

PRODUCT NUMBER	ITEM KEY	SIGNAL DATA			
		SIZE 4 x 80	TOTAL NO. OF	POSITIONS -320	NO. OF POSITIONS LOADED - 320
		PRESS FIT STYLE			
		PIN PLATING	QTY.	MATING LENGTH	TAIL LENGTH
50009-XX188	A	SEE SHEET 3	304	.210 / 5.33	.533 / 13.54
	B	SEE SHEET 3	16	.244 / 6.20	.533 / 13.54
50009-XX188LF	A	SEE SHEET 3	304	.210 / 5.33	.533 / 13.54
	B	SEE SHEET 3	16	.244 / 6.20	.533 / 13.54

	1	5	10	15	20	25	30	35	40
<u>D</u>	B	B							
<u>C</u>	B	B							
<u>B</u>	B	B							
<u>A</u>	B	B							

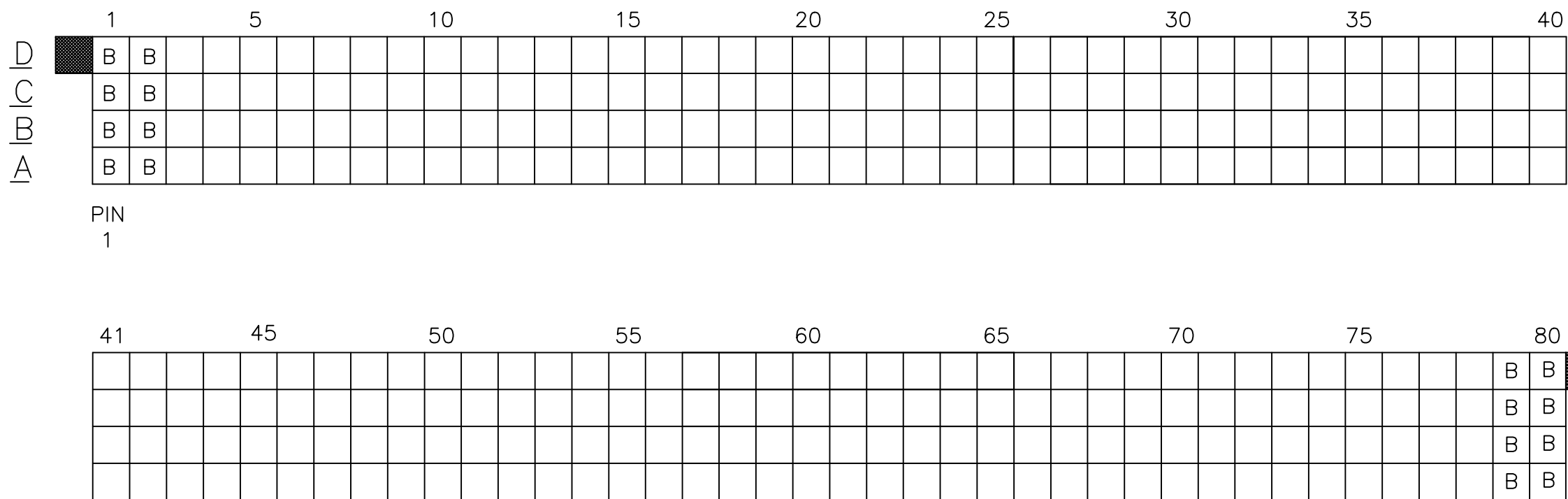
PIN
1

	41	45	50	55	60	65	70	75	80
									B B
									B B
									B B
									B B

- ALL POSITIONS ARE LOADED WITH "A" EXCEPT AS SHOWN.
- COLUMN 1, ROW A IS DESIGNATED AS SIGNAL PIN 1, AS VIEWED FROM THE MATING FACE.

mat'l. code SEE NOTE 3		surface ISO 1302 ✓	tolerance ISO 406 ISO 1101	projection 	product family HPC
ltr	ecn no	dr	date	tolerances unless otherwise specified	title
U				angles linear 0°±2'	4 ROW VERTICAL HEADER W/PRESS-FIT PINS, 0 G.P.
				.XX±.01/.3 .XXX±.005/.13 .XXX±.0020/.051	INCH/MM scale 1:1
		dr	D.HORCHLER	2005-06-29	dwg no
		enr	D.HORCHLER	2005-06-29	sheet 10 of 14 size
		chr	M JACOB	2014-01-29	50009 A3
		appd	BIJU K PAUL	2014-01-29	type Product Customer Drawing
sheet index	revision sheet				

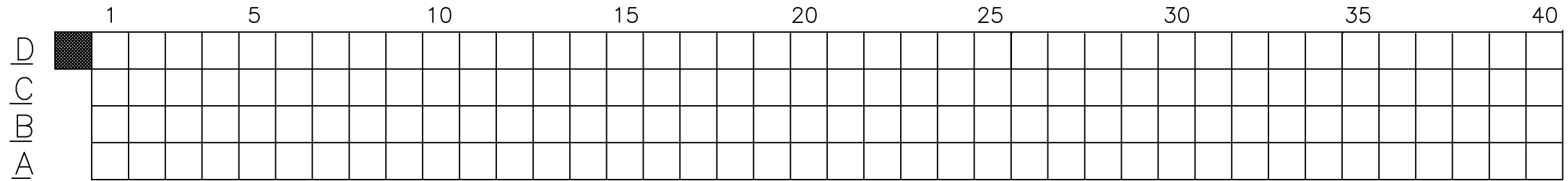
PRODUCT NUMBER	ITEM KEY	SIGNAL DATA			
		SIZE 4 x 80	TOTAL NO. OF POSITIONS - 320	NO. OF POSITIONS LOADED - 320	
		PRESS FIT STYLE			
		PIN PLATING	QTY.	MATING LENGTH	TAIL LENGTH
50009-XX189	A	SEE SHEET 3	304	.210 / 5.33	.660 / 16.76
	B	SEE SHEET 3	16	.245 / 6.22	.660 / 16.76
50009-XX189LF	A	SEE SHEET 3	304	.210 / 5.33	.660 / 16.76
	B	SEE SHEET 3	16	.245 / 6.22	.660 / 16.76



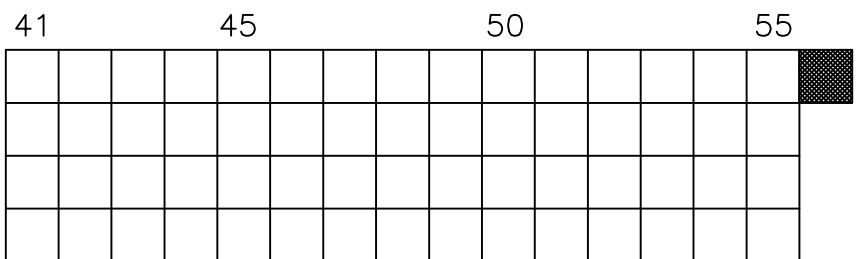
1. ALL POSITIONS ARE LOADED WITH "A" EXCEPT AS SHOWN.
2. COLUMN 1, ROW A IS DESIGNATED AS SIGNAL PIN 1, AS VIEWED FROM THE MATING FACE.

mat'l. code SEE NOTE 3		surface ISO 1302 ✓	tolerance ISO 406 ISO 1101	projection 	product family HPC
ltr	ecn no	dr	date	tolerances unless otherwise specified	title
U				angles linear .XX±.01/.3 0°±2' .XXX±.005/.13 .XXX±.0020/.051	4 ROW VERTICAL HEADER W/PRESS-FIT PINS, 0 G.P.
				dr D.HORCHLER 2005-06-29	INCH/MM scale 1:1
				enr D.HORCHLER 2005-06-29	dwg no 50009 sheet 11 of 14 size A3
				chr M JACOB 2014-01-29	type Product Customer Drawing
				appd BIJU K PAUL 2014-01-29	
sheet index	revision sheet				

PRODUCT NO.	SIGNAL DATA				
	SIZE 4 x 55	TOTAL NO. OF POSITIONS - 220	NO OF POSITIONS LOADED - 220		
	ITEM KEY	PINS: PLATING:	QUANTITY	MATING LENGTH	TAIL LENGTH
50009-XX190	A	SEE SHEET 3	220	.220 / 5.59	.250 / 6.35
50009-XX190LF	A	SEE SHEET 3	220	.220 / 5.59	.250 / 6.35



PIN
1



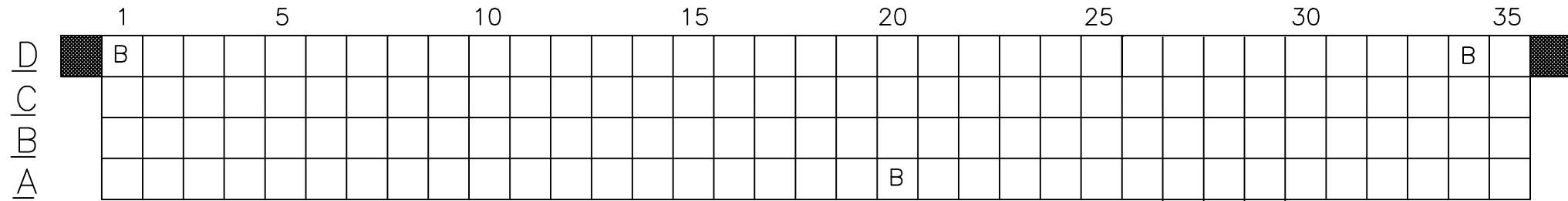
1. ALL POSITIONS ARE LOADED WITH "A".
2. COLUMN 1, ROW A IS DESIGNATED AS SIGNAL PIN 1, AS VIEWED FROM THE MATING FACE.

mat'l. code SEE NOTE 3		surface ISO 1302 ✓	tolerance ISO 406 ISO 1101	projection 	product family HPC
ltr	ecn no	dr	date	tolerances unless otherwise specified	title 4 ROW VERTICAL HEADER W/PRESS-FIT PINS, 0 G.P.
U				angles linear .XX±.01/.3 0°±2° .XXX±.005/.13 .XXX±.0020/.051	
				scale 1:1	
		dr	D.HORCHLER	2005-06-29	 sheet 12 of 14 size 50009 A3 type Product Customer Drawing
		enr	D.HORCHLER	2005-06-29	
		chr	M JACOB	2014-01-29	
		appd	BIJU K PAUL	2014-01-29	
sheet index	revision sheet				



Copyright FCI

PRODUCT NO.	ITEM KEY	SIGNAL DATA			
		SIZE 4 x 35	TOTAL NO. OF POSITIONS -140	NO. OF POSITIONS LOADED - 140	
		PLATING	QTY.	PRESS FIT STYLE	
				MATING LENGTH	TAIL LENGTH
50009-XX191	A	SEE SHEET 3	137	.220 / 5.59	.250 / 6.35
	B	SEE SHEET 3	3	.180 / 4.57	.250 / 6.35
50009-XX191LF	A	SEE SHEET 3	137	.220 / 5.59	.250 / 6.35
	B	SEE SHEET 3	3	.180 / 4.57	.250 / 6.35

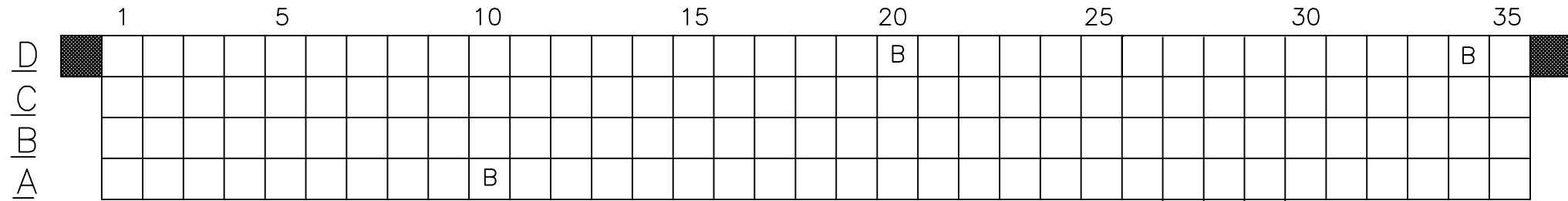


PIN
1

1. ALL POSITIONS ARE LOADED WITH "A", EXCEPT AS SHOWN.
2. COLUMN 1, ROW A IS DESIGNATED AS SIGNAL PIN 1, AS VIEWED FROM THE MATING FACE.

mat'l. code SEE NOTE 3		surface ISO 1302 ✓	tolerance ISO 406 ISO 1101	projection 	product family HPC
ltr U	ecn no	dr	date	tolerances unless otherwise specified angles linear .XX±.01/.3 .XXX±.005/.13 0°±2' .XXX±.0020/.051	INCH/MM scale 1:1
title 4 ROW VERTICAL HEADER W/PRESS-FIT PINS, 0 G.P.		dr D.HORCHLER 2005-06-29		sheet 13 of 14 size A3	
dwg no 50009		engr D.HORCHLER 2005-06-29		type Product Customer Drawing	
chr M JACOB 2014-01-29		appd BIJU K PAUL 2014-01-29		FCJ logo	
sheet index	revision sheet				

PRODUCT NO.	ITEM KEY	SIGNAL DATA			
		SIZE 4 x 35	TOTAL NO. OF POSITIONS -140	NO. OF POSITIONS LOADED - 140	
		PLATING	QTY.	PRESS FIT STYLE	
				MATING LENGTH	TAIL LENGTH
50009-XX192	A	SEE SHEET 3	137	.220 / 5.59	.250 / 6.35
	B	SEE SHEET 3	3	.180 / 4.57	.250 / 6.35
50009-XX192LF	A	SEE SHEET 3	137	.220 / 5.59	.250 / 6.35
	B	SEE SHEET 3	3	.180 / 4.57	.250 / 6.35



PIN
1

1. ALL POSITIONS ARE LOADED WITH "A", EXCEPT AS SHOWN.
2. COLUMN 1, ROW A IS DESIGNATED AS SIGNAL PIN 1, AS VIEWED FROM THE MATING FACE.

mat'l. code SEE NOTE 3		surface ISO 1302 ✓	tolerance ISO 406 ISO 1101	projection 	product family HPC
ltr U	ecn no	dr	date	tolerances unless otherwise specified angles linear 0°±2'	title 4 ROW VERTICAL HEADER W/PRESS-FIT PINS, 0 G.P.
				dr D.HORCHLER 2005-06-29 engr D.HORCHLER 2005-06-29 chr M JACOB 2014-01-29 appd BIJU K PAUL 2014-01-29	scale 1:1
sheet index	revision sheet				dwg no 50009 sheet 14 of 14 size A3 type Product Customer Drawing