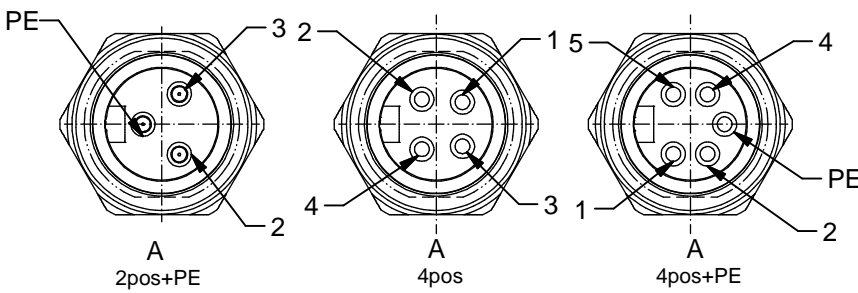


Technical specification:

| | |
|--|---------------------------|
| Rated voltage: IEC 60664-1 | 300 V |
| Overvoltage category: IEC 60664-1 | 2 |
| Overvoltage: IEC 60664-1 | 2,7 kV |
| Current rating: IEC 60512-3 at 40°C | AWG 18 8 A AWG 16 12 A |
| Insulation resistance: IEC 60512 | >=100 MΩ |
| Pollution degree: IEC 60664-1 | 3/2 |
| Degree of protection: IEC 60529 | IP 67, in mated condition |
| Temperature range: IEC 60664-1 | -30°C ... +75°C |
| Mating cycles: IEC 60512-9a | >=100 |
| Termination: | crimped |

Materials:

| | |
|------------------|---------------------|
| Contact: | CuZn |
| Contact plating: | Nickel, gold plated |
| Contact carrier: | TPU, UL 94 |
| Sealing: | FPM |
| Socket housing: | CuZn, nickel plated |
| Counter nut: | CuZn, nickel plated |



Contact assignment:

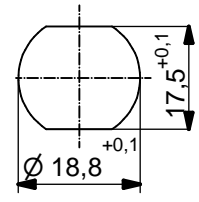
- PE ■ green-yellow
- 2 ■ brown
- 3 ■ blue

Contact assignment:

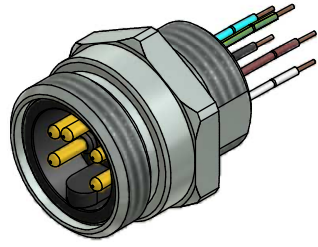
- 1 ■ brown
- 2 ■ white
- 3 ■ blue
- 4 ■ black

Contact assignment:

- 1 ■ black
- 2 ■ blue
- PE ■ green-yellow
- 4 ■ brown
- 5 ■ white



Minimum wall thickness 2,5mm, alternativ panel cut-out d=18,8



| Part no: | Description: | Pos | Wire: |
|----------|----------------------------------|-----|----------------|
| 41-40024 | SAL - 7/8 - FS2PE - 0,5 - 11 | 3 | AWG 18 PVC, UL |
| 41-40025 | SAL - 7/8 - FS4 - 0,5 - 11 | 4 | AWG 18 PVC, UL |
| 41-40026 | SAL - 7/8 - FS4PE - 0,5 | 5 | AWG 18 PVC, UL |
| 41-40033 | SAL - 7/8 - FS2PE - 0,5/150 - 11 | 3 | AWG 16 PVC, UL |
| 41-40034 | SAL - 7/8 - FS4 - 0,5/150 - 11 | 4 | AWG 16 PVC, UL |
| 41-40035 | SAL - 7/8 - FS4PE - 0,5/150 - 11 | 5 | AWG 16 PVC, UL |

| | | | | | |
|--|--|----------------|---|-----------------------------------|------|
| DO NOT ALTER CAD DRAWING BY HAND Directive 2002/95/EC RoHS compliant | Index: d 18.10.11 fro Ä4130 Temperatur changed | dim. in mm | title: Male socket 7/8" with wire, frontmounting, PG11 | | |
| | tolerance of wire: L <= 0,5m: L + 20mm L > 0,5m: L + 4% | date | | | name |
| | general tolerance: 0 ± 0,50mm 0,0 ± 0,25mm 0,00 ± 0,10mm | drawn 08.12.08 | Fromm | dwg no: 41K1A388 | |
| | CONEC ® | appd. 08.12.08 | W.Schmidt | | |
| THIS DRAWING MAY NOT BE COPIED OR REPRODUCED IN ANY WAY, AND MAY NOT BE PASSED ON TO A THIRD PARTY WITHOUT WRITTEN PERMISSION. OWNERSHIP AND COPYRIGHT OF CONEC GmbH | | | | | |