

## DETAILS

<b>Product Number</b>	C14128_TATIANA-1X4-B
<b>Family</b>	Tatiana
<b>Type</b>	Lens
<b>Color</b>	clear
<b>Diameter</b>	102x25 mm
<b>Height</b>	7,7 mm
<b>Style</b>	rectang
<b>Optic Material</b>	PMMA
<b>Holder Material</b>	
<b>Fastening</b>	screw, pin, glue
<b>Status</b>	ready
<b>ROHS Compliant</b>	Yes
<b>Date Updated</b>	17/06/2015

## OPTICAL PROPERTIES

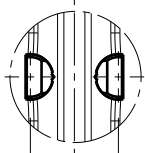
LED	Viewing Angle	Light Beam	Efficiency	cd/lm	Connector
XM-L2	145+63 deg	Streetligh...	94 %	0.540	-



D C B A

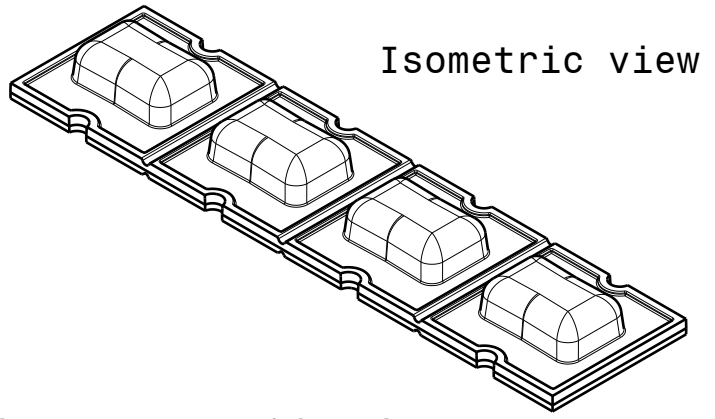
4

4



3.88

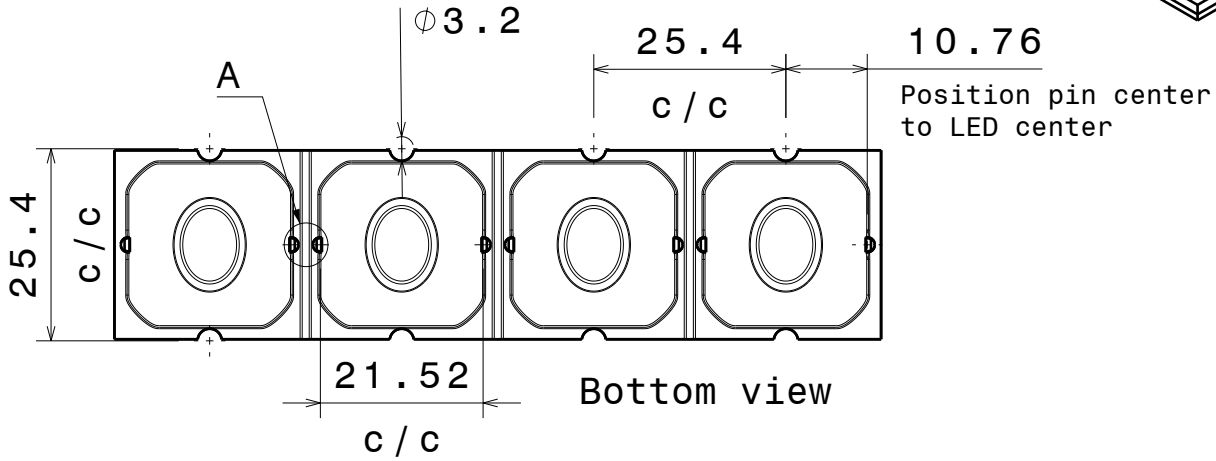
Detail A



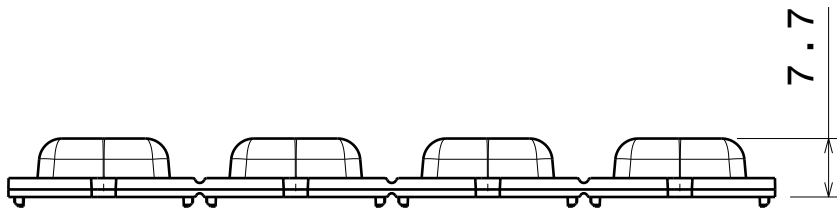
Isometric view

3

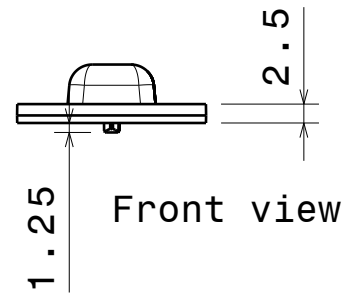
3



Bottom view



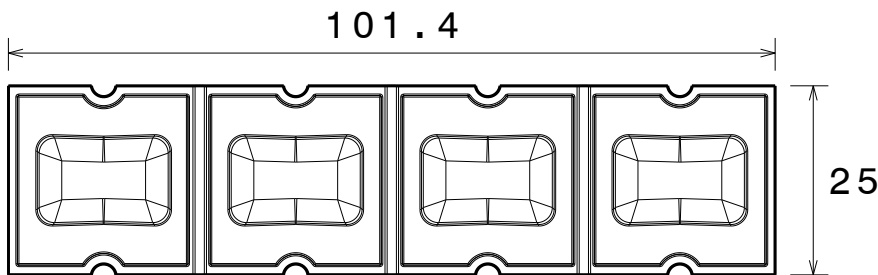
Right view



Front view

2

2



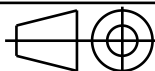
Top view

Tolerances if not otherwise shown  
According to DIN ISO 2768-1  
Linear measures:  
Up to 30mm class M, otherwise class C.  
According to DIN ISO 2768-2  
Form and position: class L



Ledil Oy  
Salorankatu 10  
FIN 24240 SALO  
Finland

THIRD ANGLE PROJECTION:



DRAWING TITLE

C14128\_TATIANA-1X4-B

This drawing is the property of LEDiL Oy. It may not be reproduced, copied or communicated without a written agreement with LEDiL Oy."

SIZE PART NUMBER

A4

C14128

SCALE 1:1 WEIGHT -

SHEET 1/1

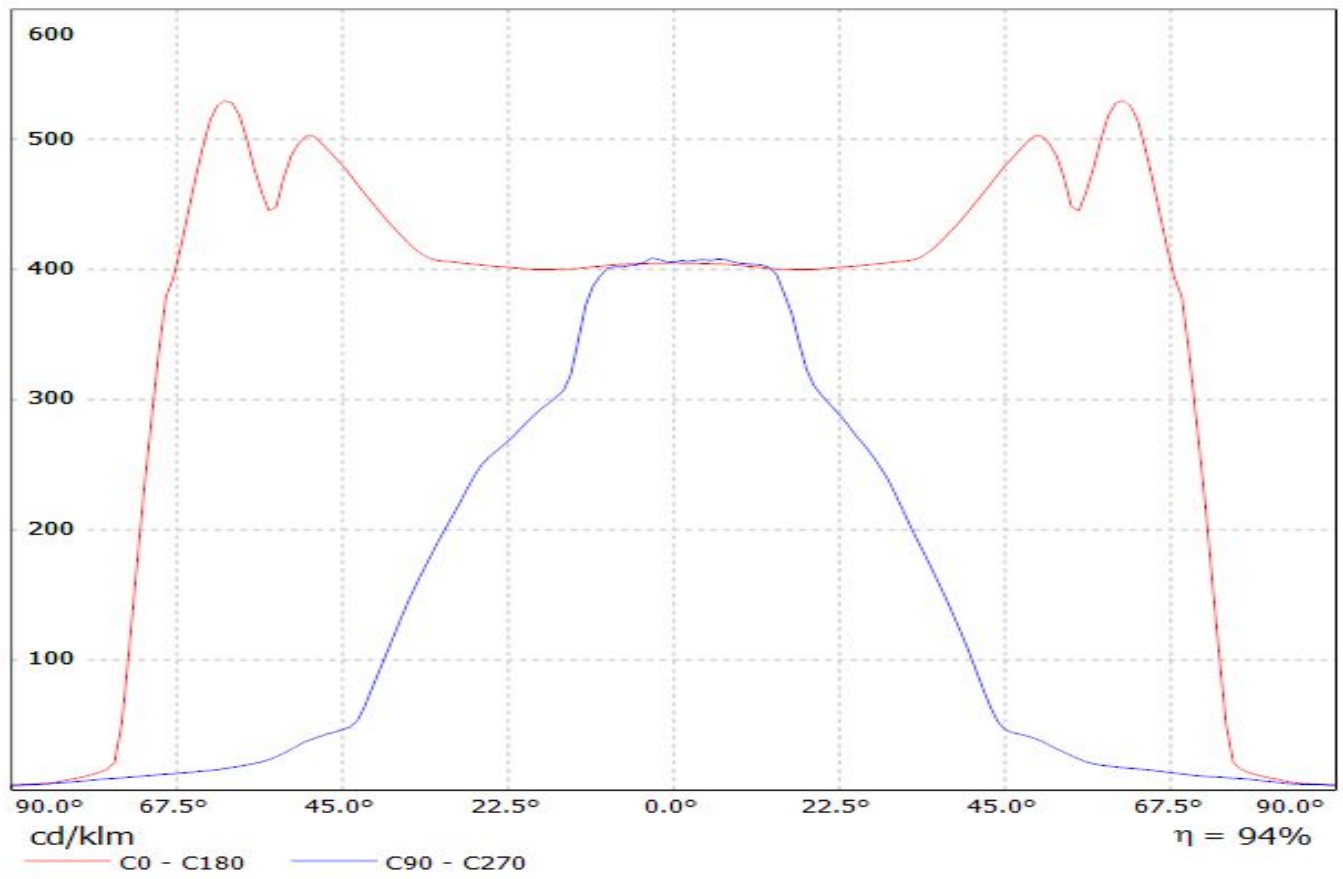
D

A

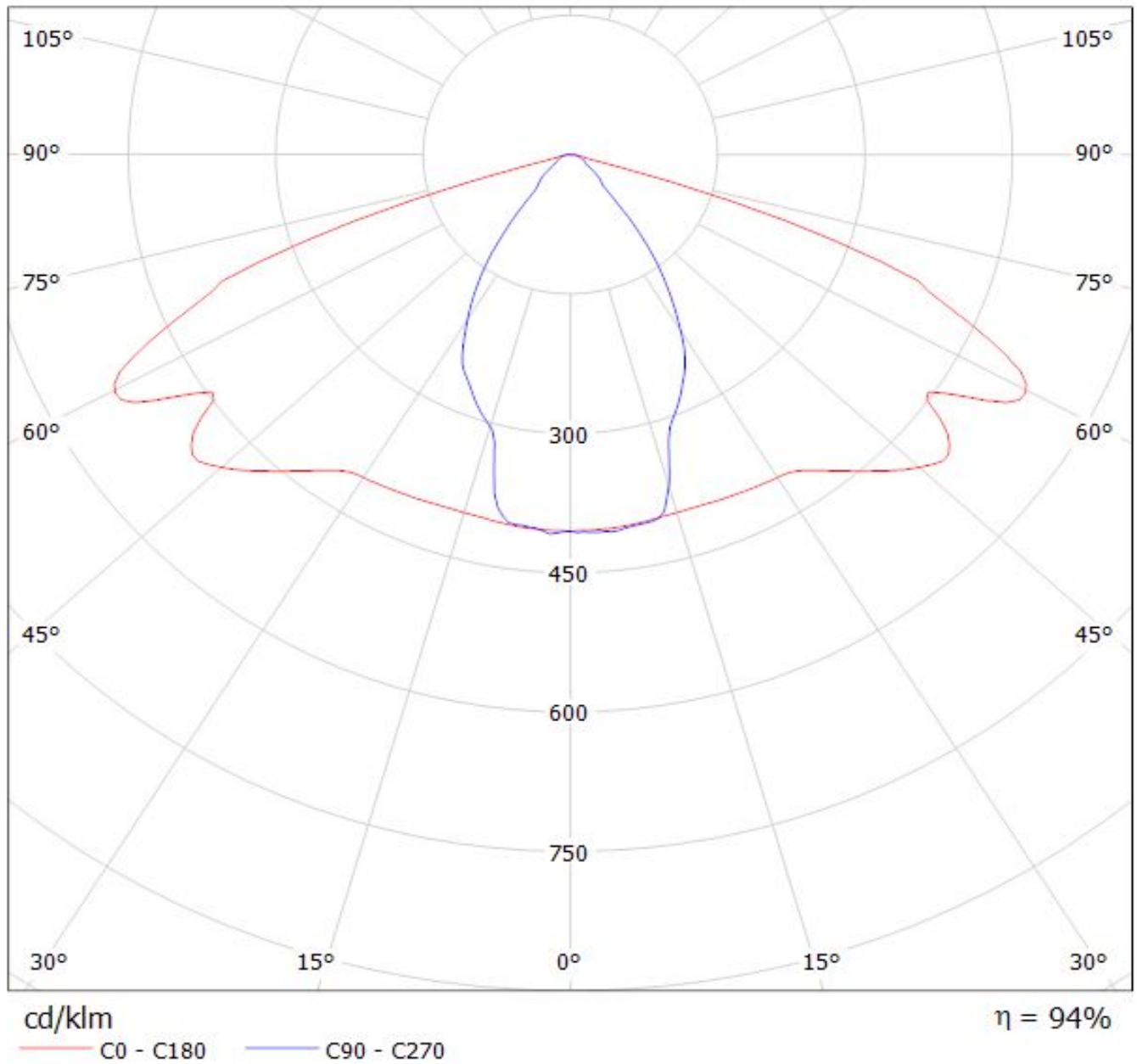
1

1

Luminaire: LEDiL Oy C14128\_TATIANA-1X4-B\_(XM-L2)  
Lamps: 1 x XM-L2\_(TATIANA)\_357lm@250mA\_P=2.84023W\_I=249.8mA



Luminaire: LEDiL Oy C14128\_TATIANA-1X4-B\_(XM-L2)  
Lamps: 1 x XM-L2\_(TATIANA)\_357lm@250mA\_P=2.84023W\_I=249.8mA



**NOTE: The typical divergence will be changed by different color, chip size and chip position tolerance. The typical total divergence is the full angle measured where the luminous intensity is half of the peak value.**